

ICOM HAM CATALOG



IC-751 BASE

- 160-10M
- 100KHz - 30MHz Receiver
- CW/SSB/AM/RTTY/FM
- 32 Memories
- Microprocessor Controlled
- 12 VDC Operation
- Fluorescent Display



HF Transceiver/General Coverage Receiver

ICOM is proud to announce the most advanced amateur transceiver in communications history. Based on ICOM's proven high technology and wide dynamic range HF receiver designs, the IC-751 is a competition grade ham receiver, a 100KHz to 30 MHz continuous tuning general coverage receiver, and a full featured all-mode, solid state ham band transmitter, that covers all the new WARC bands. And with the optional internal AC power supply, it

becomes one compact, portable/field day package.

- 105dB Dynamic Range
- 70.4515MHz First IF
- Deep IF Notch
- RIT With Separate Readout
- Low Noise Preamp
- Low IMD Transmitter
- 100% Duty Cycle
- 12VDC Operation
- Quieter Relay Selection of LPFs
- Monitor Circuit
- Full QSK
- Dual VFO With Data Transfer
- 32 Tunable Memories
- Internal Memory Backup
- Scanning
- Digital I/O For Computer Control
- Mode

Scan • Full Function Metering
• Squelch • FM • Multicolor
Fluorescent Display • Mic

Options: Voice Frequency Readout. External frequency controller, external P515 power supply, P535 internal power supply, high stability reference crystal (less than ± 10 Hz after 1 hr.), desk mic, filter options:

SSB: FL70
CWN: FL52A, FL53A
FL32, FL63
AM: FL33

Some Specifications:

■ **Frequency Coverage (Ham Band):** 1.8MHz - 2.0MHz, 3.45MHz - 4.1MHz, 6.95MHz - 7.5MHz, 9.95MHz - 10.5MHz, 13.95MHz - 14.5MHz, 17.95MHz - 18.5MHz, 20.95MHz - 21.5MHz, 24.95MHz - 25.1MHz, 27.95MHz - 30.0MHz, General Coverage (Receive Only), 0.1MHz - 30.0MHz, Thirty 1MHz Segments ■ **Frequency Control:** CPU based 10Hz step digital PLL synthesizer. Independent transmit-receive frequency available ■ **Frequency Readout:** 6 digit 100Hz fluorescent readout, with RIT readout ■ **Frequency Stability:** Less than ± 200 Hz after switch on 1 min. to 60 mins.,

and less than 30Hz after 1 hour. Less than ± 500 Hz in the range of 0°C to +50°C. (Optional high stability crystal available). ■ **Power Supply Requirements:** DC 13.8V $\pm 15\%$ negative ground current drain 20A max. (at 200W input) internal or external AC power supply is available for AC operation. ■ **Antenna Impedance:** 50 ohms unbalanced ■ **Dimensions:** 4.5"(H) x 12"(W) x 14"(D) ■ **Transmitter RF Power:** SSB (A³J) - 200 watts PEP input, CW (A¹), RTTY (F¹) - 200 watts input. Continuously adjustable output power - 10 watts Max. AM (A³) - 40 watts output, FM (F³) - 100 watts. ■ **Microphone:** Impedance 600 ohms ■ **Receiving Mode:** A¹, A³J (USB, LSB), F¹ (output FSK audio signal), A³ ■ **IF Frequencies:** 1st: 70.4515MHz, 2nd: 9.0115MHz, 3rd: 455KHz, 4th: 350KHz except FM, with continuous bandwidth control ■ **Sensitivity:** Less than 0.15 μ V for 10dB S/N/N (Preamp On) ■ **Selectivity:** SSB, CW, RTTY 2.3KHz at -6dB (Adjustable to 0.8KHz min); 4.0KHz at -60dB ■ **Audio Output:** 3 watts ■ **Audio Output Impedance:** 4 - 16 ohms ■ **RT Variable Range:** ± 9.9 KHz

Suggested Retail Price: \$1399

IC-745 BASE

- 160-10M
- 100KHz - 30MHz Receiver
- SSB/CW/AM/RTTY
- 16 Memories
- FM Option
- Microprocessor Controlled
- 12 VDC Operation



HF Transceiver/General Coverage Receiver

ICOM's IC-745 has features to fine tune received signal and ignore interference. ICOM delivers 100dB dynamic range plus these standard features:

- All Solid State
- 100% Duty Cycle
- Dual VFO's/Split Operation
- 16 Memories
- Adjustable Noise Blanker
- Adjustable AGC With OFF
- Squelch on Call Modes
- IF Shift and Passband Tuning
- Notch

- Filter
- Automatic Sideband Selection
- Speech Compressor
- Tone Control
- CW Sidetone
- Lithium Battery Memory Backup
- 12 Volt Operation

Options: IC-EX241 Marker Unit, IC-EX242 FM Unit, IC-EX243 Electric Key Unit, FL-45 9MHz Xtal Filter 500Hz -6dB, FL-54 9MHz Xtal Filter 270Hz -6dB, FL-52A 455KHz Xtal Filter 500Hz -6dB, FL-53A 455KHz Xtal Filter 250Hz

-6dB, FL-44A 455KHz SSB Filter 2.4KHz -6dB, IC-PS35 Built-in Type Power Supply.

Some Specifications:

■ **Frequency Coverage:** 0.1MHz - 30MHz, 1.8MHz - 2.0MHz, 3.45MHz - 4.1MHz, 6.95MHz - 7.5MHz, 9.95MHz - 10.5MHz, 13.95MHz - 14.5MHz, 17.95MHz - 18.5MHz, 20.95MHz - 21.5MHz, 24.95MHz - 25.1MHz, 27.95MHz - 30.0MHz ■ **Frequency Control:** CPU based 10Hz step Digital PLL synthesizer. Independent Transmit-Receive frequency ■ **Frequency Stability:** Less than 500Hz after switch on 1 min. to 60 min., and less than 100Hz after 1 hour. Less than 1KHz in the range of -10°C to +60°C ■ **Power Supply Requirements:** DC 13.8V $\pm 15\%$ Negative ground Rx Current 1.5A. Current drain 20A MAX. (at 200W input) ■ **Antenna Impedance:** 50 ohms Unbalanced ■ **Weight:** 17.6 lbs. ■ **Dimensions:** 4.4" (H) x 11.3" (W) x 14" (D) ■ **RF Power:** SSB (A³J) 200 Watts PEP Input; CW (A¹), RTTY (F¹) 200 Watts Input; Continuously

Adjustable Output; Power (10 - 100W); AM (A³) No Transmit; FM (F³) 200 Watts Input (Option) ■ **Emission Mode:** A³J SSB (Upper sideband and Lower sideband); A¹ CW; F¹ RTTY (Frequency Shift Keying); F³ FM (± 5 KHz - FM Option) ■ **Receiving Mode:** A¹, A³J (USB, LSB), F¹ (output FSK audio signal), A³, F³ (FM Option) ■ **IF Frequencies:** 1st: 70.4515MHz, 2nd: 9.0115MHz, 3rd: 455KHz with continuous Bandwidth Control ■ **Sensitivity:** SSB/CW/RTTY for 10dB S/N: 1.6 - 30MHz Preamp On 0.15 μ V. AM for 10dB S/N: 0.1 - 1.6MHz ■ **Selectivity:** SSB, CW, RTTY: 2.2KHz at -6dB, 4.5KHz at -60dB. CW AF Filter: Passband Tuning will narrow to 700Hz. AM: 4KHz at -6dB, 15KHz at -60dB. FM: 15KHz at -6dB, 30KHz at -60dB. Audio Output: 2.8W. RIT Range: ± 1.5 KHz. Notch Filter: 30dB

Suggested Retail Price: \$999

New

IC-735 BASE

- 160-10M
- 100KHz - 30MHz Receiver
- FM/CW/AM
- 12 Memories
- Microprocessor Controlled
- 12VDC Operation
- LCD Readout



HF Transceiver/General Coverage Receiver

The ICOM IC-735 is the most compact and advanced full-featured HF transceiver with general coverage receiver on the market. Measuring only 3.7 inches high by 9.5 inches wide by 9 inches deep, the IC-735 is well suited for mobile, marine or base station operation.

Dollar-for-dollar the IC-735 includes more standard features...FM built-in, an HM-12 scanning mic, FM, CW, LSB, USB, AM transmit and receive, 12 tunable memories and lithium

memory backup, program scan, memory scan, switchable AGC, automatic SSB selection by band, RF speech processor, 12V operation, continuously adjustable output power up to 100 watts, 100% duty cycle and a deep tunable notch.

The IC-735 has a built-in receiver attenuator, preamp and noise blanker to enhance receiver performance.

The large LCD readout and conveniently located controls enable easy operation,

even in the mobile environment. Controls which require rare adjustment are placed behind a hatch cover on the front panel of the radio.

Some Specifications:

■ **Frequency Coverage (Ham Band):** 1.8MHz - 2.0MHz, 3.4 MHz - 4.1MHz, 6.9MHz - 7.5MHz, 9.9MHz - 10.5MHz, 13.95MHz - 14.5MHz, 17.9MHz - 18.5MHz, 20.9 MHz - 21.5MHz, 24.4MHz - 25.1MHz, 27.9MHz - 30.0MHz ■ **General Coverage (receive only):** 0.1MHz - 30.0MHz (continuous) ■ **Frequency Control:** Dual VFO CPU based 10Hz step digital PLL synthesizer. Independent transmit/receive frequency available on same band (using split function). ■ **Frequency Stability:** Less than ± 200 Hz after switch on 1 min. to 60 mins., and less than ± 30 Hz after 1 hour. Less than ± 500 Hz in the range of 0°C to +50°C. ■ **Power Supply Requirements:** DC 13.8V $\pm 15\%$ negative ground current drain 20A max. (at 200W input). External AC power supply is available for AC operation.

■ **Antenna Impedance:** 50 ohms unbalanced ■ **Dimensions:** 3.7"(H) x 9.5"(W) x 9"(D) ■ **Weight:** 11.1 lbs. ■ **Transmitter RF Power:** SSB (A³J) - 200 watts PEP input, CW (A¹) - 200 watts input, FM (F¹) - 200 watts input, AM (A³) - 40 watts output. Adjustable output power. ■ **Receiving Mode:** A¹, A³J (USB, LSB), A³, F³ ■ **IF Frequencies:** 1st: 70.4515MHz (SSB, AM, FM); 70.4506MHz (CW); 2nd: 9.0115MHz (SSB, AM, FM); 9.0106MHz (CW); 3rd: 455KHz ■ **Sensitivity:** SSB, CW, 0.1 - 1.6MHz less than 1.0 μ V for 10dB S/N, 1.6 - 30MHz less than 0.15 μ V for 10dB S/N, AM, 0.1 - 1.6MHz less than 0.6 μ V for 10dB S/N, 1.6 - 30MHz less than 1 μ V for 10dB S/N, FM, 1.6 - 30MHz less than 0.3 μ V for 12dB SINAD ■ **Spurious Response Rejection Ratio:** More than 80dB ■ **Audio Output:** More than 3 watts @ 10% distortion with 8 ohm load

Suggested Retail Price: \$849

ICOM RECEIVERS



HF General Coverage Receiver

ICOM introduces the **IC-R71A** 100KHz-30MHz super-or-grade general coverage receiver with innovative features including keyboard frequency entry and wireless remote control (optional).

This easy-to-use and versatile receiver is ideal for anyone wanting to listen in to worldwide communications. Demanding no previous shortwave receiver experience, the **IC-R71A** will accommodate an SWL (shortwave listener), Ham (amateur radio operator), maritime operator or commercial operator.

With 32 programmable memory channels, SSB/AM/RTTY/CW/FM (optional), dual VFO's, scanning, selectable AGC and noise blanker, the **IC-R71A's** versatility is unmatched by any

other commercial grade unit in its price range.

Utilizing ICOM's DFM (Direct Feed Mixer), the **IC-R71A** is virtually immune to interference from strong adjacent signals, and has a 100dB dynamic range.

ICOM introduces a unique feature to shortwave receivers...direct keyboard entry for simplified operation. Precise frequencies can be selected by pushing the digit keys in sequence of frequency. The frequency will be automatically entered without changing the main tuning control. Memory channels may be called up by pressing the VFO/M (memory) switch, then keying in the memory channel number from 1 to 32.

A quartz-locked rock solid synthesized tuning system provides superb stability. Three tuning rates are provided: 10Hz / 50Hz / 1KHz.

Thirty-two tunable memories, more than any other general coverage receiver on the market, offer instant recall of your favorite frequency. Each memory stores frequency, VFO and operating mode, and is backed by an internal lithium memory backup battery to maintain the memories for up to five years.

Options. FM, synthesized voice frequency readout (activated by SPEECH button), RC11 wireless remote controller, IC-CK70 DC adapter for 12 volt operation, MB12 mobile mounting bracket, two CW filters FL32 - 500Hz, and FL63 - 250Hz, high-grade 455KHz crystal filter FL44A, and CR64 high stability crystal.

Some Specifications.

■ **Frequency Coverage:** 0.1MHz - 30.0MHz ■ **Frequency Control:** CPU based 10Hz step Digital PLL synthesizer with dual VFO system. Direct frequency entry through keyboard or RC-11 remote unit. ■ **Memories:** 32 tunable memories store frequency and mode. ■ **Scanning:** Memory and band scan with auto-stop. ■ **Frequency Readout:** 6 digit 100Hz fluorescent readout. ■ **Frequency Stability:** Less than 250Hz after switch on 1 min to 60 mins, and less than 50Hz after 1 hour. Less than 500Hz in the range of +10°C to +50°C. With optional CR-64

high stability crystal: Less than ±50Hz after switch on 1 min to 60 mins, and less than ±10Hz after 1 hour at normal room temperature. Less than ±100Hz in the range of -10°C to +60°C. ■ **Power Supply Requirements:** 117V or 235V ±10% 50 - 60Hz 30V A.(100V/200V/220V use requires internal modification).

■ **Antenna Impedance:** 50 ohms Unbalanced (Single wire can be used on 0.1 - 1.6MHz). ■ **Weight:** 7.5kg (16.5 lbs.) ■ **Dimensions:** 111mm(H) x 286mm(W) x 276mm (D) (4 3/8 in. x 11 1/4 in. x 10 7/8 in.)

■ **Receiving System:** Quadruple Conversion Superhetrodyne with continuous Passband Tuning, (F3*, Triple Conversion Superhetrodyne).

■ **Receiving Mode:** A1, A2J (USB, LSB), F1 (Output FSK audio signal), A3, F3*.

■ **IF Frequencies:** 1st: 70.4515MHz, 2nd: 9.0115MHz, 3rd: 455KHz, 4th: 9.0115MHz (except F3*); with continuous Passband Tuning (except F3*).

■ **2nd IF Center Frequency:** SSB (A3J) FM* (F3) - 9.0115MHz, CW (A1) RTTY (F1) - 9.0106MHz, AM (A3) - 9.0100MHz. ■ **Sensitivity (when preamplifier is ON):** SSB, CW, RTTY: Less than 0.15 microvolts (0.1 - 1.6MHz: 1 microvolt) for 10dB S+N/N; AM: Less than 0.5 microvolts (0.1 - 1.6MHz: 3 microvolts); FM*: Less than 0.3 microvolts for 12dB SINAD (1.6 - 30MHz).

■ **Selectivity:** SSB, CW, RTTY: 2.3KHz at -6dB (Adjustable to 500Hz min), 4.2KHz at -60dB; CW-N, RTTY-N: 500Hz at -6dB, 1.5KHz at -60dB; AM: 6KHz at -6dB (Adjustable to 2.7KHz min), 15KHz at -50dB; FM*: 15KHz at -6dB, 25KHz at -60dB. ■ **Spurious Response Rejection Ratio:** More than 60dB. ■ **Audio Output:** More than 2 watts. ■ **Audio Output Impedance:** 8 ohms.

Suggested Retail Price: \$799

IC-R71A RECEIVER

- 100KHz - 30MHz General Coverage Receiver
- Keyboard Frequency Entry
- 32 Memories
- FM Option
- Microprocessor Controlled
- 110/220 VAC
- 12 VDC Option

*When optional FM unit is installed.



VHF/UHF Receiver

It's the best 25-2000MHz* continuous coverage receiver on the market...the **IC-R7000**. With 99 owner programmable memories, the **IC-R7000** covers aircraft, marine, business, ham (amateur radio), emergency

services, government and television bands...all for a remarkably low price.

Keyboard Entry. For simplified operation, the **IC-R7000** features direct keyboard entry. Precise frequencies

can be selected by pushing the digit keys in sequence of the frequency. The frequency will be automatically entered without changing the main tuning knob. Memory channels may be called up by pressing the Memory switch, then keying in the memory channel number from 1 to 99.

99 Memories. The **IC-R7000** has 99 memories available to store your favorite frequencies, including the operating mode. All memories are backed up by a lithium battery.

Other Outstanding Features: • FM/AM/SSB Modes • Scanning: memory, mode, select memory scan, priority,

or programmable frequency limits • Narrow/Wide Filter Selection • Five Tuning Speeds: 0.1, 1.0, 5, 10, 12.5 or 25KHz • Compact Size: 4 3/8" H x 11 1/4" W x 10 7/8" D • Dial Lock • Noise Blanker • S-meter, Center Meter • Fluorescent Display with Dimmer Switch • Optional RC-12 Infrared Remote Controller • Optional Voice Synthesizer

Suggested Retail Price: \$899

* Specifications guaranteed from 25-1300MHz

IC-R7000 RECEIVER

- 25MHz-2000MHz* General Coverage Receiver
- Keyboard Frequency Entry
- 99 Memories
- FM/AM/SSB
- Microprocessor Controlled
- 12 VDC Operation

ICOM PRESENTS A NEW OPERATING SYSTEM ON THE HF BANDS..... THE "ICOM-SYSTEM"

Until today you needed to tune up your transceiver and linear amplifier each time you wanted to change the operating band. But now, the ICOM HF transceiver and the IC-2KL linear employ wide band amplifiers which require no tuning up for any band or frequency.

In addition, the transceiver puts out a band switch control signal, operating the band selector of the IC-2KL and/or other external equipment, such as the automatic antenna tuner IC-AT500. So you now can make quick QSY's, and have trouble-free operation. This is the "ICOM-SYSTEM"

ICOM VHF

IC-271H(A) BASE

- 100/25 Watts
- 32 Built-in Subaudible Tones
- 32 Memory Channels
- 12 VDC
- Internal Power Supply Option
- Fluorescent Display



2-Meter/FM/CW/SSB 100 or 25 Watts

For the ultimate in 2-meter communications, ICOM presents the IC-271H transceiver with a high dynamic range receiver and a 100 watt transmitter. Operating from the IC-PS30, IC-PS15, or the internal IC-PS35 (optional), the IC-271H brings all the advanced functions of the latest CPU controlled radios to your shack.

Standard features include 100 watts of power...32 built-in subaudible tones which are easily selected by rotating the main

tuning knob...32 memory channels which hold frequency, offset, offset direction, mode and subaudible tone...PLL locked at 10Hz...ICOM's high visibility, easy-to-read fluorescent display...memory and programmed band scanning, including Mode scan which scans memories with a particular mode or locks out busy frequencies so the receiver will not stop at that memory channel while scanning.

Optional features

include a switchable preamplifier, CTCSS encoder/decoder (encoder is standard), computer interface and voice synthesizer.

The 25 watt IC-271A is also available and has the same outstanding features and size (11 1/4" W x 4 3/8" H) as the IC-271H. An optional IC-PS25 internal power supply makes the IC-271A a compact, go-anywhere 2-meter base station.

Some Specifications:

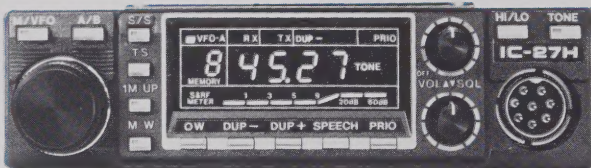
■ **Frequency Coverage:** 143.8000 — 148.1999MHz ■ **Frequency Resolution:** SSB, 10/100 Hz Steps/FM 5KHz steps, 1KHz steps with TS button depressed ■ **Frequency Readout:** 7 digit fluorescent display 100Hz readout w/RIT ■ **Frequency Stability:** ±10 PPM (-10° — +60°C) ■ **Memory Channels:** 32 channels, any inband frequency programmable ■ **Usable Conditions:** Temperature: -10°C — 60°C (14°F — 140°F) Duty cycle: continuous ■ **Power Supply Requirement:** 13.8V DC ±15% (negative ground) 6A max. or 117V/AC ±10%

■ **Dimensions:** 4.4"(H) x 11.3"(W) x 10.8"(D) ■ **Transmitter Output Power:** SSB 25W (PEP), CW 25W, FM 1 — 25W (Adjustable) ■ **Emission Mode:** SSB (A3J, USB/LSB), CW (A1), FM (F3) ■ **Modulation Systems:** SSB: Balanced modulation, FM: Variable reactance frequency modulation ■ **Max. Frequency Deviation:** ±5KHz ■ **Microphone:** 600 Ohm (IC-SM6 optional base mic available) ■ **Operating Mode:** Simplex, Duplex (any inband frequency separation programmable) ■ **Receiving Mode:** SSB: (A3J, USB/LSB), CW (A1), FM (F3) ■ **Sensitivity:** SSB, CW: Less than 0.5 microvolts for 10dB S+N/N, FM: More than 30dB S+N/D/N+D at 1 microvolt ■ **Selectivity:** SSB, CW: More than ±1.2KHz at -6dB point, Less than ±2.4KHz at -60dB point; FM: More than ±7.5KHz at -6dB point, Less than ±15KHz at -60dB point ■ **Audio Output Power:** 2 Watts ■ **Audio Output Impedance:** 8 ohms ■ **RIT Variable Range:** ±9.9KHz

Suggested Retail Prices:
IC-271H \$899/IC-271A \$699

IC-27H/A MOBILE

- Compact
- Internal Speaker
- 32 PL Frequencies
- 9 Memories
- 45/25 Watts
- Scanning



2-Meter/FM

ICOM presents the IC-27A, 25 Watt and its brother, the IC-27H 45 Watt, 2 meter mobiles. Together they constitute an important breakthrough in 2 meter mobile communications. Both measure only 1 1/2" H x 5 1/2" W and have internal speakers which make them the most

compact 2 meter mobiles available. The IC-27's are full featured VHF mobiles with 32 PL frequencies front panel selectable from the main tuning knob, 9 memories which store a receive frequency, transmit offset and PL tone; priority scan, dual VFO's, 1 meg-up button, tuning speed button and

optional speech synthesizer. The HM23 microphone with up/down buttons and DTMF pad are standard. A new style mobile mount allows front mounting of the unit without having to swing the mobile mount open.

The optional speech synthesizer (UT16) verbally announces the receiver frequency of the transceiver through the simple push of a button. This unique feature allows the user to hear what frequency he is operating on without looking at the transceiver.

Some Specifications:

■ **Frequency Coverage:** 143.800 — 148.195MHz ■ **Current Drain (at 13.8VDC):** Receiving squelched approx. 0.4A; receiving max audio approx. 0.6A; transmit at 5 watts approx. 3.0A; transmit at 25 watts

approx. 6.0A/25H, 45 watts, 10A ■ **Dimensions:** 5.5"(W) x 1.5"(H) x 7"(D) (8.9" - 27H) ■ **Weight:** Approx. 2.6 lbs. ■ **Transmitter Output Power:** 45W/25W High, 5 Watt Low ■ **Emission Mode:** 16F3 ■ **Microphone:** 600 ohm electret condenser mic PTT switch, Touchtone® encoder built-in Up/Down scan buttons ■ **Operating Mode:** Simplex or duplex with ±600KHz, or splits, Programmable in 100KHz increments ■ **Receiver Receiving System:** Double conversion superheterodyne ■ **Receiver Intermediate Frequency:** 1st: 10.695MHz; 2nd: 455KHz ■ **Receiver Sensitivity:** Less than 0.4µV for 20dB noise quieting, less than 30dB S+N/D/N+1 @ 1 microvolt ■ **Receiver Selectivity:** More than ±7.5KHz at -6dB, less than ±15KHz or -60dB

Suggested Retail Prices:
IC-27A \$369/IC-27H \$409

IC-02AT HANDHELD

- Digital Readout
- Scanning
- 10 Memories
- 32 PL Tones
- 3 Watt Std/ 5 Watt Opt



2-Meter/FM

ICOM's new top-of-the-line IC-02AT compliments its existing line of popular handheld transceivers and accessories. The new direct entry microprocessor controlled IC-02AT is a full-featured 2-meter handheld.

Some of its many features are: scanning, 10 memories, duplex offset storage in memory, odd offsets, 32 keyboard selectable PL tones which store in memory, and internal lithium battery backup.

Keyboard entry through the 16-button pad allows easy access of frequencies, duplex, memories, memory scan, priority, dial lock, PL tones and DTMF.

An easy-to-read custom LCD readout indicates frequency, memory channel, signal strength and transmitter output, PL tone, and scanning functions.

The new IC-02AT has a high/low power switch battery lock, frequency lock, and lamp on/off switch. An aluminum case back is provided for superior heatsinking when the IC-02AT is run at

the standard 3 watt level or 5 watts (optional battery pack).

A variety of batteries are available for the IC-02AT, including the new long-life 8.4 volt IC-BP8 and 13.2 volt IC-BP7. The IC-BP7 and BP8 may be charged from a top panel connector...for 13.8 volts which will also power transceiver operation.

ICOM's IC-2A(T) continues to be available...and its complete line of accessories are compatible with the new IC-02A(T).

Some Specifications:

■ **Frequency Coverage:** 140.000 — 151.550MHz ■ **Frequency Resolution:** 5KHz steps ■ **Frequency Control:** Digital PLL synthesizer, with keyboard entry ■ **Scanning System:** Priority, memory, program ■ **Frequency Readout:** LCD display (with switchable back light)

■ **Power Supply Requirement:** 13.8VDC or attendant batteries ■ **Current Drain (at 8.4VDC):** Transmitting — High (3.0w) approx. 1.0A, Low (0.5w) approx. 450mA; Receiving — At max. audio approx. 140mA, squelched approx. 35mA ■ **Dimensions:** 4.6"(H) x 2.6"(W) x 1.4"(D) without battery case ■ **Weight:** 1.2 lbs. (including BP3 battery pack and flexible antenna) ■ **Transmitter Output Power:** High — 3.0w (at 8.4VDC), 5.0w (at 13.2VDC); Low — 0.5w (at 8.4VDC) ■ **Emission Mode:** 16F3 ■ **Receiver Receiving System:** Double conversion superheterodyne ■ **Receiving Mode:** 16F3 ■ **Receiver Intermediate Frequencies:** 1st 16.9MHz, 2nd 455KHz ■ **Receiver Sensitivity:** Less than 0.32mV for 20dB noise quieting ■ **Receiver Audio Output Power:** More than 500mW ■ **Audio Output Impedance:** 8 ohms

Suggested Retail Price:
IC-02AT \$349



2-Meter/FM/CW/SSB

Ease of operation on FM is provided by 5 memories plus 2 VFOs...Priority channel...Programmable offsets...5 or 1 KHz tuning. CW and SSB can be used equally conveniently with features such as squelch on sideband, 2 VFOs with equalizing capability for marking your signal frequency...1 KHz or

100Hz tuning...CW sidetone...RIT...AGC selective...and, noise blanker.

The IC-290H incorporates a full capability scanning system which allows scanning the whole band, part of the band, or the memories. Automatic stop and automatic resume after carrier drop or predetermined adjustable

delay is selectable by the user.

The ICOM IC-290H features provide: Remote tuning from the optional HM10 microphone...Digital frequency display...Hi/lo power switch...LED indicators...LED bar meter...Touchtone® microphone standard...and, offsets are variable in 100KHz increments.

Some Specifications.

■ **Frequency Coverage:** 143.800 — 148.195 MHz ■ **Power Supply Requirement:** 13.8V DC ±15% (negative ground) 3.5A Max. ■ **Current drain (at 13.8V DC):** Transmitting - SSB (PEP 10W) Approx. 2.2A; CW, FM (10W/1W)

Approx. 3.2A/1.6A: Receiving - at max. audio output Approx. 0.9A; Squelched Approx. 0.7A ■ **Transmitter Output Power:** SSB High 25W (PEP)/ Low 1W (PEP), CW High 25W/Low 1W, FM High 25W/Low 1W (Variable 1-25 Watts) ■ **Microphone:** 1.3k ohm dynamic microphone with built in preamplifier ■ **Receiving System:** SSB, CW single conversion superheterodyne; FM double conversion superheterodyne ■ **Receiver Intermediate Frequency:** SSB, CW 10.75 MHz; FM 10.75 MHz; 455KHz ■ **Receiver Sensitivity:** SSB, CW Less than 0.5 microvolts for 10dB S+N/N, More than 3-dB S+N+D/N+D at 1 microvolt Less than 0.6 microvolts for 20dB noise quieting.

Suggested Retail Price: \$549

IC-290H MOBILE

- 2 Meter Multimode
- 25 Watt
- Green LED
- Microprocessor Controlled
- 12 VDC



2-Meter/FM

Here are a few reasons why the IC-2A is an extremely popular handheld: It's versatility...many sizes of battery

packs which easily slide on or slide off providing other power outputs and operating cycles...

Extremely compact...Fits in the palm of your hand...Only 2.6" x 1.4" x 6.5" with 800 channels transmit and receive...Synthesized...Excellent audio quality...Separate speaker and mic built in...Output power 1½ watts high with BP3, .5 watt battery saving on low...Touchtone® pad on the 2AT is provided as standard.

Each 2A and 2AT comes complete with BP3 NiCd pak, AC wall charger, flexible antenna, earphone, wrist strap and belt clip. All standard at no extra cost.

See page 10 for options.

Some Specifications:

■ **Frequency Coverage:** 144.00 — 147.995MHz ■ **Frequency Resolution:** 5KHz steps ■ **Frequency Control:** Digital PLL synthesizer, with thumb-wheel switches ■ **Power Supply Requirement:** DC 8.4V with attend-

ant power pack IC-BP3 negative ground is acceptable ■ **Current Drain (at 8.4V DC):** Transmitting - High (1.5w) approx. 700mA, Low (0.15w) approx. 300mA, Receiving - At max. audio approx. 170mA, Squelched approx. 22mA ■ **Dimensions:** 4.6"(H) x 2.6"(W) x 1.4"(D) without power pack ■ **Attendant Power Pack IC-BP3:** 49mm(H) x 65mm(W) x 35mm(D) ■ **Weight:** 1 lb. (IC-2AT: 1.1 lbs.) including power pack, IC-BP3 and flexible antenna ■ **Transmitter Output Power:** High 1.5w (at 8.4V), Low 0.15w (at 8.4V) ■ **Emission Mode:** 16F3 ■ **Receiver Receiving System:** Double conversion superheterodyne ■ **Receiving Mode:** 16F3 ■ **Receiver Intermediate Frequency:** 1st: 16.9MHz, 2nd: 455KHz ■ **Receiver Sensitivity:** Less than 0.5µV for 20dB noise quieting. More than 26dB S+N+D/N+ at 1 microvolt ■ **Receiver Audio Output Power:** More than 400mW ■ **Audio Output Power:** 8 ohms

Suggested Retail Prices: IC-2A \$239.50/IC-2AT \$269.50

IC-2A(T) HANDHELD

- Easy to use
- Affordable
- Digital PLL



Dual Bander

Finally there's a compact full featured 25 watt FM dual bander that's simple in design and operation, plus very affordable...the IC-3200A.

Dual Bands. The IC-3200A covers both the 2-meter (140.000-150.000MHz) and 70cm (440.000-450.000MHz) bands. The IC-3200A also features fully programmable offsets in 5KHz steps for MARS and CAP repeater operation.

25 Watts. The IC-3200A delivers 25 watts of output on both bands. Or the low power can be adjusted to one to ten watts.

Compact. The IC-3200A is only 5½"W x 2"H x 8½"D. Simple to Operate.

With only 14 front panel controls, the IC-3200A is by far the easiest dual bander to use.

Memory Lockout. For scanning only certain memory channels, ICOM utilizes a memory skip (M SKIP) function.

10 Tunable Memories. To store your favorite frequencies, 10 memories are provided. Each memory will store the receive frequency, transmit offset, offset direction and PL tone. Each memory can be tuned up or down when selected, yet automatically returns to the

original frequency when re-selected. All memories are backed up with a lithium battery.

Scanning. The IC-3200A has four scanning systems...memory scan, band scan, program scan and priority scan.

Other Outstanding Standard Features: • New LCD Display, easy to read in bright sunlight • Tone Encoder (all PL/subaudible tones built-in) • IC-HM14 Mic with up/down scan and DTMF • One Antenna Connector (duplexer already installed) • Variable Tuning Increments — 5 and 15KHz (2-meters), 5 and 25KHz (70cm) • Frequency Dial Lock • Dual VFO's • Mounting Bracket

Some Specifications:

■ **Frequency Coverage:** 2M Band: 140.000 — 150.000MHz; 70cm Band: 440.000 — 450.000MHz ■ **Frequency Resolution:** 5KHz or 15KHz VHF/5 or 25KHz UHF ■ **Frequency Control:** Microcomputer based digital PLL synthesizer. Independent dual VFO capability

■ **Frequency Readout:** 6 digit LCD (liquid crystal display) ■ **Memory Channels:** 10 channels ■ **Antenna Impedance:** 50ohms (single connector) ■ **Power Supply Requirements:** 13.8V DC ±15% Negative Ground ■ **Current Drain (at 13.8V DC):** Standby 500mA RX with full audio 650mA, High Power TX 6.0A, Low Power TX 3.0A ■ **Dimensions:** 5.5"(H) x 2"(W) x 8.5"(D) ■ **Weight:** 4.2 lbs. ■ **Transmitter Output Power:** 2M-25W High, 5W Low (adjustable), 70M-25W High, 5W Low (adjustable) ■ **Emission Mode:** 16F3 ■ **Modulation Systems:** FM-Variable Reactance ■ **Spurious Emission:** -60dB or better ■ **Microphone Impedance:** 600 ohm electret ■ **Operating Mode:** Simplex or Duplex in band ■ **Receiving System:** Double conversion superheterodyne ■ **Intermediate Frequencies:** 1st: 30.875MHz; 2nd: 455KHz ■ **Selectivity:** -6dB 15KHz / -60dB 30KHz ■ **Spurious & Image Rejection:** Better than 60dB ■ **Sensitivity:** FM less than 25µV for 12dB SINAD ■ **Audio Output Power:** 1.7 watts (8 ohms, 10% distortion)

Suggested Retail Price: \$549

New

IC-3200A DUAL BANDER

- 140.000-150.000MHz
- 440.000 — 450.000MHz
- 10 Memories
- Microprocessor Controlled
- 12 VDC Operation

NEW • Now Available AH-32 Dual Band Antenna

ICOM UHF

IC-471H(A) BASE

- 75/25 Watts
- 430 - 450MHz
- Fluorescent Display
- 32 Memories
- 32 PL Tones
- 12 VDC Operation



430 - 450MHz/FM/CW/SSB/75 or 25 Watts

Full 20MHz coverage 430 - 450MHz. 32 Memories. Each memory holds frequency, mode, offset direction, offset frequency and subaudible tone for easy return to an often used frequency or for remembering a new repeater or simplex frequency. Subaudible Tones. Subaudible tones are selected by rotating the main tuning knob. These tones may then

be stored into memory along with the frequency, offering ease of operation. An extremely low noise and good signal to noise ratio PLL design allows the IC-471(H)A

to lock to 10Hz for extreme accuracy. New Display. ICOM's new easy-to-read two color fluorescent transceiver situation display shows frequency, mode, offset direction, VFO in

use, memory channel, and RIT offset direction and amount.

Scanning. Scanning of memories, programmable band scan, and mode scanning are available and easy to use.

New Size. Only 11¼"W x 4¾"H x 10¼"D the IC-471(H)A is styled to look good and engineered for ease of operation.

Internal power supply/mast-mounted preamp optional.

Some Specifications:

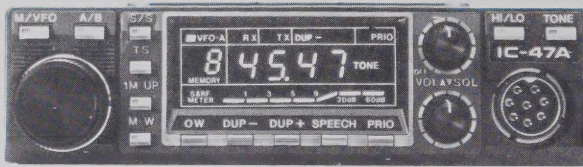
■ Frequency Coverage: 430 - 450MHz ■ Frequency Resolution: SSB 10/100Hz steps, FM 5KHz steps, 1KHz steps with TS switch turned ON ■ Frequency Readout: 7 digit fluorescent display / 100Hz readout / RIT ■ Frequency Stability: ±10 PPM (-10°C to +60°C) ■ Memory Channels: 32 Channels, any inband frequency programmable ■ Usable Conditions: Temperature: -10°C - 60°C (14°F - 140°F) ■ Power Supply Requirement: 13.8V

DC ±15% (negative ground) 4A Max or 11.7V AC ±10% ■ Current Drain (at 13.8V DC): Transmitting: SSB Approx. 8.0A; CW, FM Approx. 6.0A; FM Approx. 2.5A (471H 4.0A) Receiving: At max. audio output Approx. 1.4A; Squelched Approx. 1.2A ■ Dimensions: 4.4"(H) x 11.3"(W) x 3.9"(D); 471H - 12.8"(D) ■ Transmitter Output Power: SSB CW, FM 1 - 25W (Adjustable); 471H - 10 - 75W (Adjustable) ■ Modulation System: SSB Balanced modulation, FM Variable reactance frequency modulation ■ Max. Frequency Deviator: ±5KHz ■ Microphone: 600 ohm electret ■ Operating Mode: Simplex, Duplex ■ Receiving Mode: SSB (A3), USB/LSB), CW (A1), FM(F3) ■ Sensitivity: SSB, CW: Less than 0.5 microvolts for 10dB S+N/N; FM: Less than 0.6 microvolts for 20dB Noise quieting ■ Selectivity: SSB, CW: More than ±2.2KHz at -60dB point, Less than +2.4KHz at -60dB point; FM: More than ±7.5KHz at -60dB point, Less than ±15KHz at -60dB point ■ Audio Output Power: 2.0W ■ Audio Output Impedance: 8 ohms ■ RIT Variable Range: ±9.9KHz

Suggested Retail Prices:
IC-471H \$1099/IC-471A \$799

IC-47A MOBILE

- 440 - 450MHz
- TT Mic Included
- Microprocessor Controlled
- Scanning
- 9 Memories
- 32 PL Frequencies
- 25 Watts
- 12 VDC



440MHz/FM

The IC-47A 440MHz FM mobile is ICOM's microminimized transceiver for UHF communication. It has 25 Watts of RF power, internal speaker, 32 PL frequencies built in and selectable with the main tuning knob, 9 memories storing frequency, offset and PL tone with lithium battery backup; scanning of memories and band, priority scan plus an optional speech synthesizer. HM23 DTMF microphone is standard, as is a stacking front loading mobile

mount, for use in conjunction with either the IC-27A or the IC-37A.

The optional speech synthesizer (IC-UT16) verbally announces the receive frequency. Tones are selected by holding the tone button in and rotating the main tuning knob. Tone channel number appears in the display.

Memory scanning, priority scanning and band scanning are easily accessed through S/S button. Top panel controls are for scan parameters.

Some Specifications:

■ Frequency Coverage: 440MHz - 450MHz ■ Frequency Resolution: 5KHz/25KHz steps ■ Frequency Control: Microcomputer based 5KHz step Digital PLL synthesizer Independent Dual VFO Capability ■ Frequency Stability: Within ±0.001% ■ Memory Channels: 9 channels with any inband frequency programmable ■ Usable Conditions: Temperature: -10°C - 60°C (14°F - 140°F); Operational time: Continuous ■ Antenna Impedance: 50 ohms unbalanced ■ Power Supply Requirement: 13.8V DC ±15% (negative ground); 7A Max. ■ Current Drain (at 13.8V DC): Transmitting: High (25W), Approx. 7.0A; Low (5W), Approx. 3.5A Receiving: At max audio output, Approx. 0.7A; Squelched, Approx. 0.5A ■ Dimensions: 1.5"(1.6")x(H) x 5.5"(W) x 8.9"(9.4")x(D), () ■ Weight: Approx. 3.1 lbs. ■ Output Power: High 25W Low 5W ■ Emission Mode: 16F3 (F3E 16K0) ■ Modulation System: Variable

reactance frequency modulation ■ Max. Frequency Deviator: ±5KHz ■ Spurious Emission: More than 60dB below carrier ■ Microphone: 600 ohm electret condenser microphone with push-to-talk and frequency UP/DOWN switches. (IC-47A: with 16 key dual-tone pad) ■ Operating Mode: Simplex, Duplex (Any offset in-band in 100KHz increments programmable) ■ Receiving System: Double-conversion superheterodyne ■ Modulation Acceptance: 16F3 (F3E 16K0) ■ Intermediate Frequencies: 1st: 21.800MHz, 2nd: 455KHz ■ Sensitivity: Less than 0.2mV for 12dB SINAD, Less than 0.4mV for 20dB Noise quieting ■ Squelch Sensitivity: Less than 0.15mV ■ Spurious Response Rejection Ratio: More than 60dB ■ Selectivity: More than 15KHz at -60dB point, Less than 30KHz at -60dB point ■ Audio Output Power: More than 2.0W ■ Audio Output Impedance: 4 - 8 ohms

Suggested Retail Price: \$469

IC-04AT HANDHELD

- 440 - 449.995MHz
- LCD Readout with S-Meter
- Frequency Entry
- PL Tones
- Scanning
- 10 Memories
- 3 Watt Std/ 5 Watt Opt



440MHz/FM

The IC-04AT reflects the latest technology in a multi-function, multifeature

handheld transceiver for 440 - 450MHz. Frequency entry, control functions and the 32 PL tones are controlled by the 16-button pad on the face of the radio. Also included are priority scanning (both of memories and programmable band scan), custom LCD readout, and DTMF.

Ten memories with internal lithium battery backup give the ultimate in flexibility for easy access to most-used channels. The IC-04AT may be used to bring up any frequency between 440 and 449.995MHz with 5KHz spacing, or favorite frequencies may be stored in the memory and recalled at the touch of a button.

The IC-04AT comes complete with a sealed case, an aluminum heatsink and battery lock. The IC-04AT utilizes the existing accessories for the IC-2A(T), plus new accessories such as long-life and high-power battery packs and a boom headset.

Some Specifications:

■ Frequency Coverage: 440.000 - 449.995MHz ■ Frequency Resolution: 5KHz steps ■ Frequency Control: Digital PLL synthesizer with keyboard entry ■ Scanning System: Priority, memory, program ■ Frequency Readout: LCD display (with switchable back light) ■ Power Supply Requirement: 13.8VDC or attendant batteries ■ Current Drain (at 8.4VDC): Transmitting - High (3.0w) approx. 1.2A, Low (0.5w) approx. 450mA; Receiving - At

max. audio approx. 170mA, squelched approx. 45mA ■ Dimension: 4.6"(H) x 2.6"(W) x 1.4"(D) without battery case ■ Weight: 1.1 lbs. (including BP3 battery pack and flexible antenna) ■ Transmitter Output Power: High 3.0w (at 8.4VDC), 5.0w (at 13.2VDC); Low 0.5w (at 8.4VDC) ■ Emission Mode: 16F3 ■ Receiver Receiving System: Double conversion superheterodyne ■ Receiving Mode: 16F3 ■ Receiver Intermediate Frequencies: 1st 21.8MHz, 2nd 455KHz ■ Receiver Sensitivity: Less than 0.32mV for 20dB noise quieting ■ Receiver Audio Output Power: More than 500mW ■ Audio Output Impedance: 8 ohms

Suggested Retail Price:
IC-04AT \$379



440MHz/FM

The IC-4AT series is ICOM's 440MHz handheld transceiver, featuring 5KHz tuning, low or high power, simplex or duplex operation

on ± 5 MHz. The IC-4AT covers the entire 440 band, from 440 MHz to 449.995.

Accessories for the IC-4AT, as for the IC-3A/3AT, IC-

2A/2AT are compatible.

The IC-4AT, additionally, has a 16 button Touchtone® pad for control of repeater or remote base operations.

Featuring 1/2 watt high and .15 watts low power and .25 microvolt receiver sensitivity, the IC-4AT is truly an outstanding performer at a reasonable price for operation on 440 MHz.

The IC-4A is identical to the IC-4AT, except without the Touchtone® pad.

Each unit comes complete with BP3 Battery Pack, AC Wall Charger, Belt Clip and Flexible Antenna.

Some Specifications:

■ **Frequency Coverage:** 440.000 — 449.995MHz ■ **Frequency Resolution:** 5KHz steps ■ **Frequency Control:** Digital PLL synthesizer, with thumbwheel switches ■ **Power Supply Requirements:** DC 8.4V with

attendant power pack IC-BP3 negative ground is acceptable ■ **Current Drain (at 8.4V DC):** Transmitting - High (1.5w) approx. 700mA, Low (0.5w) approx. 300mA; Receiving - at max audio approx. 170mA, Squelched approx. 22mA ■ **Dimensions:** 4.6"(H) x 1.4"(W) x 1.4"(D) without power pack ■ **Attendant Power Pack IC-BP3:** 49mm(H) x 65mm(W) x 35mm(D) ■ **Weight:** 1.1 lbs. (IC-4AT: 1.1 lbs.) including power pack, IC-BP3 and flexible antenna ■ **Transmitter Output Power:** High 1.5w (at 8.4v), Low 0.15w (at 8.4v) ■ **Emission Mode:** 16F3 ■ **Receiver Receiving System:** Double conversion superheterodyne ■ **Receiving Mode:** 16F3 ■ **Receiver Intermediate Frequency:** 1st: 26.8MHz, 2nd: 455KHz ■ **Receiver Sensitivity:** Less than 0.5uV for 20dB noise quieting. More than 26dB S+N+D/N+D at 1 microvolt ■ **Receiver Audio Output Power:** More than 400mW ■ **Audio Output Power:** 8ohms

Suggested Retail Prices: IC-4A \$269.95/IC-4AT \$299.95

IC-4A(T) HANDHELD

- Affordable
- Easy to use
- Digital PLL



430MHz Multimode

The IC-490A transceiver provides many desirable base station features in a mobile package. This compact, high performance multimode radio features FM, SSB and CW (CW monitor included) to satisfy your needs in the 430-440 MHz region.

Two VFO's, priority call frequency, 1 MHz up button and 4 memories mean convenience in quickly selecting important frequencies.

Scanning features include full band scan, programmable band scan (scans between memory 1 and 2) or memory scan.

Using internal switches, the IC-490A will resume scan after an adjustable time delay, resume scan after carrier drop, sense busy or empty channels, and control scan speed.

The IC-490A has a highly visible green LED readout for use over a wide range of ambient light conditions. Also, there are LED annunciators for receive, send, priority, call and duplex, as well as an LED meter. For receive on SSB, AGC speed and noise blanker are controlled from the front panel. Memory backup is available with the optional IC-BU1 memory backup unit.

With 10 watts output in a 6 11/16" wide x 2 1/2" high x 8 3/8" deep package, the very compact IC-490A gives you multi-featured operation for your entry into the 70cm band.

Some Specifications:

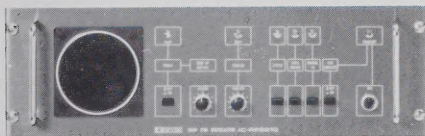
■ **Frequency Coverage:** 430.000 — 439.990MHz ■ **Frequency Resolution:** SSB, 100Hz steps FM 5KHz/25KHz steps 1KHz steps with 1KHz steps button depressed ■ **Frequency Readout:** 5 digit LED 100Hz readout ■ **Frequency Stability:** Within ± 2.5 KHz ■ **Memory Channels:** 5 Channels, any inband frequency programmable ■ **Usable Conditions:** Temperature: -10°C to 60°C (14°F - 140°F) ■ **Power Supply Requirement:** 13.8V DC $\pm 15\%$ (negative ground) 3.5A Max. ■ **Current Drain (at 13.8V DC):** Transmitting: SSB (PEP 10W) Approx. 3.2A, FM (10W/1W) Approx. 3.3A/1.5A, Receiving CW (10W) Approx. 3.6A, At max. audio output Approx. 0.9A, Squelched Approx. 0.6A. ■ **Dimensions:** 64mm(H)x170mm(W)x218mm(D) ■ **Output Power:** SSB High 10W (PEP)/Low 1W (PEP); CW High 10W/Low 1W; FM High, 10W/Low 1W ■ **Emission Mode:** SSB (A3J, USB/LSB), CW (A1), FM (F3) ■ **Modulation System:** SSB: Balanced modulation; FM: Variable

reactance frequency modulation ■ **Max. Frequency Deviation:** ± 5 KHz ■ **Spurious Emission:** More than 60dB below peak power output ■ **Carrier Suppression:** More than 40dB below peak power output ■ **Unwanted Sideband:** More than 40dB down at 1000Hz AF input ■ **Microphone:** 1.3K ohm dynamic microphone with built-in preamplifier ■ **Operating Mode:** Simplex, Duplex (any 100KHz steps inband frequency separation programmable.) ■ **Receiving System:** SSB, CW: Double conversion superheterodyne; FM: Triple conversion superheterodyne ■ **Receiving Mode:** SSB (A3J USB/LSB), CW (A1), FM (F3) ■ **Intermediate Frequency:** SSB, CW: SSB, CW 39.38 MHz, 10.75MHz, FM 39.38MHz, 10.75 MHz, 455KHz ■ **Sensitivity:** SSB, CW: Less than 0.5 microvolts for 10dB S+N/N; FM: More than 30dB S+N+D/N+D at 1 microvolt, Less than 0.6 microvolts for 20dB Noise quieting. ■ **Squelch Sensitivity:** Less than 0.4 microvolts ■ **Spurious Response Rejection Ratio:** More than 60dB ■ **Selectivity:** SSB, CW: More than ± 1.2 KHz at -6dB point; Less than ± 2.4 KHz at -60dB point. FM: More than ± 7.5 KHz at -60dB point; Less than ± 15 KHz at -60dB point. ■ **Audio Output Power:** More than 2W ■ **Audio Output Impedance:** 8 ohms.

Suggested Retail Price: \$649

IC-490A MOBILE

- FM/CW/SSB
- Green LED
- Scanning
- TT Mic Included
- Microprocessor Controlled
- 12 VDC



440MHz FM Repeater

The IC-RP3010 is a 10 watt FM repeater for amateur radio communications on the 430 — 450MHz band. Making full use of its advanced technology, ICOM has introduced, both in the IC-RP3010's receiver and transmitter units, circuits that are generally employed in commercial radio applications.

To enhance durability and service-life reliability, the components are housed in a

sturdy steel frame.

A microprocessor, Intel P8035L is used in the repeater control unit to cover both internal and external control functions. With the ROM installed independently of the CPU, specifications (call sign, etc.) can be easily adapted to user requirements.

Some Specifications:

■ **Frequency Coverage:** 430 — 450MHz ■ **Mode:** 16F3 (16F2 for

ID) ■ **Number of Channels:** 1 (crystal controlled system) ■ **Repeater Control System:** Carrier/CTCSS operating system (switch selectable) ■ **Power Supply Voltage:** 117V/240V AC or 13.8V DC ■ **Ambient Temperatures:** -10°C to +50°C ■ **Duty Cycle:** Continuous ■ **Antenna Impedance:** 50 ohms unbalanced ■ **Dimensions:** 5 7/8"(H) x 19"(W) x 15 3/8"(D) ■ **Weight:** Approx. 32.5 kg ■ **Transmitter RF Output Power:** 10W +20%, -50% ■ **Frequency Stability:** Within $\pm 5 \times 10^{-6}$ ■ **Frequency Multiplication:** 8 times (2x2x2) ■ **Modulation System:** Variable reactance phase modulation ■ **Max. Frequency Deviation:** ± 5 KHz ■ **Modulation Frequency Response:** 6dB/oct., +1dB, -3dB at 300 to 3000Hz; Less than -23dB at 20KHz (on 1000Hz basis) ■ **Overall Distortion:** Less than 10% for 60% modulation at 1000Hz ■ **S/N Ratio:** More than 40dB for 60% modulation at 1000Hz ■ **Spurious Emission:** Less than -60dB ■ **Occupied Bandwidth:** Less than 16KHz ■ **Receiving**

System: Double-conversion superheterodyne ■ **Intermediate Frequencies:** First IF: 21.8MHz, Second IF: 455KHz ■ **Sensitivity:** Less than 0.5uV for 12dB SINAD ■ **Squelch Sensitivity:** Less than 0.2uV ■ **Local Oscillation Crystal Frequency:** (Receive frequency — 21.8MHz)/9 ■ **Local Oscillation Frequency Stability:** Within $\pm 5 \times 10^{-6}$ ■ **Selectivity:** More than 12KHz at -6dB point, Less than 25KHz at -70dB point ■ **Spurious Response Rejection Ratio:** More than 70dB ■ **Desensitization:** More than 70dB ■ **Intermodulation Response:** More than 60dB ■ **AF Power Output:** 2.0W (at 10% distortion with 8-ohm load) ■ **Tone Decoder (CTCSS):** Frequency: 88.5Hz $\pm 0.5\%$ (other frequency available) ■ **Sensitivity:** Less than 6dB SINAD ■ **Response Time:** 250 microseconds or less ■ **Control Unit: Hang-up Time:** Within 5 seconds (selectable) ■ **ID Sending Speed:** 45 characters/min (at 800Hz) ■ **ID Interval:** First transmission after 2 — 3 mins. transmission ■ **Remote Control:** DTMF Control ■ **Suggested Retail Price: \$999**

IC-RP3010 REPEATER

- Crystal Controlled
- CTCSS/DTMF/IDER
- 10 Watts

ICOM 1200MHz

New

IC-1271A BASE



1.2GHz Transceiver

- 1240MHz - 1300MHz
- 10 Watts
- 32 Memories
- Scanning
- Multi-Mode Operation

Explore the world of 1.2GHz with ICOM's new IC-1271A base station transceiver.

ICOM introduces the first full-featured 1240 to 1300MHz base station transceiver, the IC-1271A. With 10 watts of RF output power, 32 memories, scanning and multi-mode operation including ATV (amateur TV), the IC-1271A is a pioneer in 1.2GHz technology.

Whether your interest is in mobile, DX, repeater, satellite or moonbounce operation, the IC-1271A has exceptional receiver sensitivity because of front end GaAs FETs.

Some Specifications:

■ **Frequency Coverage:** 1240 - 1300MHz ■ **Operating Mode:** J3E (A3J) - SSB (upper and lower sideband); A1A (A1) - CW; F3E (F3) - CW ■ **Frequency Resolution:** SSB, CW - 100Hz; FM - 25KHz ■ **Frequency Control:** CPU based 100Hz step digi-

tal PLL synthesizer. Independent transmit/receive frequency available ■ **Frequency Readout:** 7 digit, 1KHz display ■ **Usable Temperature Range:** -10°C +60°C (+14°F +140°F) ■ **Frequency Stability:** Within 0.0003% in the range of 0°C +50°C ■ **Memory Channels:** 32 channels with any in-band frequency programmable ■ **Power Supply Requirements:** 13.8V DC +15% (negative ground). Current drain 7.5A maximum ■ **Current Drain (at 13.8V DC):** Transmitting - Approx. 7.5A; Receiving - At maximum audio output - Approx. 1.5A. Squelched - Approx. 1.3A ■ **Antenna Impedance:** 50 ohms unbalanced ■ **Weight:** 7.1kg/15.62 lbs. ■ **Dimensions:** 4.4" (H) x 11.3" (W) x 10.9" (D) ■ **Transmitter RF Output Power:** J3E (SSB) - 10 watts PEP; A1A (CW), F3E (FM) - 10 watts; Continuously adjustable output power from 1 to 10 watts ■ **Modulation System:** SSB: Balanced modulation; FM: Variable reactance frequency modulation ■ **Spurious Emissions:** More than 50dB below

peak power output ■ **Carrier Suppression:** More than 40dB below peak power output ■ **Unwanted Sideband:** More than 40dB down with 1000Hz AF input ■ **Operating Modes:** Simplex or semi-duplex ■ **Microphone:** 600 ohm electret condenser microphone with push-to-talk switch and scanning buttons ■ **Receiving System:** J3E (SSB), A1A (CW): Double conversion superheterodyne; F3E (FM): Triple conversion superheterodyne ■ **Intermediate Frequencies:** SSB, CW 1st: 133.860-133.869MHz, 2nd: 10.75MHz; FM 1st: 133.860-133.869MHz, 2nd: 10.75MHz, 3rd: 455KHz ■ **Sensitivity:** SSB, CW: Less than 0.16µV for 10dB S+N/N; FM: Less than 0.22µV for 12dB SINAD, Less than 0.32µV for 20dB noise quieting ■ **Selectivity:** SSB, CW: More than 1.2KHz at -6dB point, Less than 2.4KHz at -60dB point; FM: More than 7.5KHz at -6dB point, Less than 15KHz at -60dB point

Suggested Retail Price: \$999

IC-120 MOBILE

- 1260 - 1300MHz
- Green LED
- 6 Memories
- Scanning
- Programmable Offsets
- 12 VDC Operation



1.2GHz/FM/1 Watt

ICOM gives you the opportunity to explore the spectrum from 1260 to 1300MHz... 40MHz... with all the features found on popular 2 meter and 440MHz rigs plus some:

Memories. Six memory channels plus 2 VFO's provide storage of most used frequencies in this wide band. Each memory allows memory of frequency, offset direction, offset frequency, and tone encoder frequency. Internal memory backup available.

Scanning. Scan the memories, scan all 40MHz or program a segment to be scanned. All scanning has the option of scanning for a busy or open channel.

Duplex. Be able to work different repeater offsets, with ICOM's programmable offset system, as they become available.

3 Tuning Rates. Tuning increments of 10KHz, 20KHz or 1MHz are available for rapid or slow tuning of the band.

RIT. RIT on FM? Yes, ±5KHz on either side of the transmit frequency allows you to tune signals offset from yours.

Readout. Four digit green LED readout for easy visibility day or night.

The ICOM IC-120 gives you all of this plus a very quiet PLL circuit, with excellent signal to noise ratio, high sensitivity and a stabilized power amplifier to provide full power over its temperature and voltage ranges, and the IC-120 is small, only 2"H x 5½"W x 8½"D.

Some Specifications:

■ **Frequency Coverage:** 1260 - 1300MHz ■ **Frequency Resolution:** 10KHz or 20KHz Steps with 1MHz up/down ■ **Frequency Control:** Microcomputer based digital PLL synthesizer. Independent dual VFO capability ■ **Frequency Readout:** 4 Digit LED, 10KHz resolution ■ **Frequency Stability:** ± PPM (-10°C +60°C) ■ **Memory Channels:** 6 Channels, any inband frequency program-

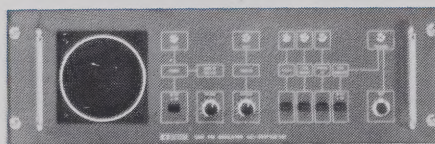
mable ■ **Usable Conditions:** Temperature - 10° to +60°C (14°F to 140°F); Duty cycle: continuous ■ **Antenna Impedance:** 50 ohms unbalanced ■ **Power Supply Requirement:** 13.8VDC ±15%, negative ground, 2A max ■ **Current Drain (at 13.8V DC):** Receiving squelched (approx.) 0.6A; Receiving max audio (approx.) 0.8A; Transmit @ 1 watt (approx.) 2.0A ■ **Dimensions:** 5.5"(W) x 2"(H) x 8.1"(D) ■ **Weight:** 4.2 lbs. (approx.) ■ **Transmitter Output Power:** 1 watt ■ **Emission Mode:** 16F3 ■ **Modulation System:** Variable reactance frequency modulation ■ **Max. Frequency Deviation:** ±5.0KHz ■ **Spurious Emission:** -60dB or more below carrier ■ **Microphone:** 600 ohm electret ■ **Receiving Mode:** 16F3 ■ **Sensitivity:** Less than 0.5µV for 20dB noise quieting; Less than 0.3µV for 12dB SINAD ■ **Squelch Sensitivity:** 0.4 microvolt or better ■ **Spurious Response Rejection Ratio:** More than 60dB ■ **Selectivity:** More than ±7.5KHz at -6dB; less than ±15KHz at -60dB ■ **Audio Output Power:** 2.0 watts or more ■ **Audio Output Impedance:** 8 ohms ■ **RIT Variable Range:** ±5.0KHz

Suggested Retail Price: \$499

NEW

- ML12 10 Watt Amplifier Available

IC-1210 REPEATER



- PLL Frequency Controlled
- High Stability
- CTCSS/DTMF/ID'ER
- 10 Watts

1.2GHz/FM/PLL Frequency Selection

The IC-RP1210 is an FM repeater for amateur radio communications on the 1.2GHz band. Making full use of its advanced technology, ICOM has introduced both in the IC-RP3010's receiver and transmitter units, circuits that are generally employed in commercial radio applications. To enhance durability and service-life reliability, the components are housed in a sturdy steel frame.

A microprocessor, Intel P8035L, is used in the repeater

control unit to cover both internal and external control functions. With ROM installed independently of the CPU, specifications (call sign, etc.) can be easily adapted to user requirements.

198 channels may be selected from the synthesized circuitry via DIP switch programming. Cabinet/duplexer optional.

Some Specifications.

■ **Frequency coverage:** 1270 - 1271.98MHz; Rx, Tx up 20MHz ■ **Mode:** 16F3 (16F2 for ID) ■ **Number of Channels:** 198 (DIP

switch programmable) ■ **Channel Spacing:** 10KHz ■ **Repeater Control System:** Carrier/CTCSS operating system (switch selectable) ■ **Power Supply Voltage:** 117V/240V AC or 13.8V ■ **Rated Input:** 120W

■ **Ambient Temperatures:** -10°C to +50°C ■ **Duty Cycle:** Continuous ■ **Antenna Impedance:** 50 ohms unbalanced ■ **Dimensions:** 5¾"(H) x 19"(W) x 15¾"(D) ■ **Weight:** Approx. 32.5kg ■ **Transmitter RF Output Power:** 10W +20%, -50% ■ **Frequency Stability:** Within ±5 x 10⁻⁶ ■ **Frequency Multiplication:** 8 times (2x2x2) ■ **Modulation System:** Variable reactance phase modulation ■ **Max. Frequency Deviation:** ±5KHz ■ **Modulation Frequency Response:** 6dB/oct., +1dB, -3dB at 300 to 3000Hz; Less than -23dB at 20KHz (on 1000Hz basis) ■ **Overall Distortion:** Less than 10% for 60% modulation ■ **Receiving System:** Double-conversion superheterodyne ■ **Sensitivity:** Less than 0.5µV for 12dB SINAD ■ **AF Power Output:** 2.0W (at 10% distortion with 8ohm load) ■ **Tone Decoder (CTCSS):** Frequency: 88.5Hz ±0.5% (other frequency available) ■ **Sensitivity:** Less than 6dB SINAD ■ **Response Time:** 250 microseconds or less

■ **Control Unit: Hang-up Time:** Within 5 seconds (selectable) ■ **ID Sending Speed:** 45 characters/min. (at 800Hz) ■ **ID Interval:** First transmission after 2-3 mins. transmission ■ **Remote Control:** DTMF control

Suggested Retail Price: \$1199

ICOM 220MHz / 6 METER



220MHz/FM

ICOM's IC-3AT 220 MHz transceiver provides full coverage of the 220 MHz band. The IC-3AT is similar in size and appearance to the

popular IC-2AT, and all accessories including battery packs, chargers, microphones, etc., are completely compatible between the two

radios.

The IC-3AT features a 16-button Touchtone® pad for control functions and both simplex and duplex operation. The IC-3AT comes complete with IC-BP3 NiCd battery pack, AC wall charger, belt clip, rubber duckie and strap, all standard at no extra cost.

An undedicated switch is provided on top of the radio for control of PL or other functions. Simplex and 1.6MHz duplex operation are standard.

The IC-3AT makes a perfect companion for the IC-2AT transceiver and such functions as repeater control may be actuated by use of this versatile transceiver.

The IC-3A is identical to the IC-3AT, except without the Touchtone® pad.

Some Specifications:

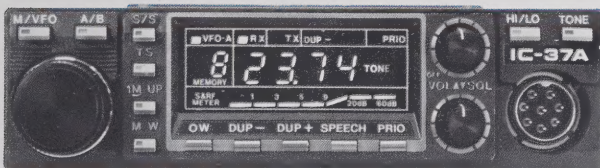
■ **Frequency Coverage:** 220.000 — 224.990MHz ■ **Frequency Resolution:** 10KHz steps, 500 channels

■ **Frequency Control:** Digital PLL synthesizer, with thumbwheel switches ■ **Power Supply Requirements:** DC 8.4V with attendant power pack IC-BP3 negative ground is acceptable ■ **Current Drain (at 8.4V DC):** Transmitting - High (1.5w) approx. 550mA, Squelched approx. 20mA ■ **Dimensions:** 4.6" (H) x 2.65" (W) x 1.4" (D) without power pack ■ **Attendant Power Pack IC-BP3:** 49mm(H) x 65mm(W) x 35mm(D) ■ **Weight:** 1.1 lbs. (IC-3AT: 1.1 lbs.) including power pack, IC-BP3 and flexible antenna ■ **Transmitter Output Power:** High 1.5w (at 8.4v), Low 0.15w (at 8.4v) ■ **Emission Mode:** 16F3 ■ **Receiver Receiving System:** Double conversion superheterodyne ■ **Receiving Mode:** 16F3 ■ **Receiver Intermediate Frequency:** 1st: 6.9MHz, 2nd: 455KHz ■ **Receiver Sensitivity:** Less than 0.5uV for 20dB noise quieting. More than 26dB S+N+D/N+D at 1 microvolt ■ **Receiver Audio Output Power:** more than 300mW ■ **Audio Output Power:** 8 ohms

IC-3A(T) HANDHELD

- 220 - 225 MHz
- Affordable
- Easy to use
- Digital PLL

Suggested Retail Prices: IC-3A \$269.95/IC-3AT \$299.95



220MHz/25 Watts

ICOM is first in the modern world of 220MHz with the IC-37A mobile. The IC-37A covers 220 — 225MHz, has 25 Watts of power, 9 memories, internal speaker, 2 VFO's and all EIA encoding subaudible tones installed as standard. Tones may be selected by rotating the main tuning knob. Other features include: priority scan, offset check, 1 meg-up button, tuning speed button and dual VFO's. An optional speech synthesizer is available and

front panel actuated. Low power is 5 Watts.

The optional speech synthesizer (IC-UT16) verbally announces the receive frequency. Tones are selected by holding the tone button in and rotating the main tuning knob. Tone channel number appears in the display.

Memory scanning, priority scanning and band scanning are easily accessed through S/S button. Top panel controls are for scan parameters.

Some Specifications:

■ **Frequency Coverage:** 220 — 225MHz ■ **Frequency Resolution:** 5KHz/10KHz steps ■ **Frequency Control:** Microcomputer based 5KHz step Digital PLL synthesizer Independent Dual VFO Capability ■ **Frequency Stability:** Within ±0.001% ■ **Memory Channels:** 9 channels with any inband frequency programmable ■ **Usable Conditions:** Temperature: -10°C — 60°C (14°F — 140°F); Operational time: Continuous ■ **Antenna Impedance:** 50 ohms unbalanced ■ **Power Supply Requirement:** 13.8V DC±15% (negative ground), 7A Max. ■ **Current Drain (at 13.8V DC):** Transmitting: High (25W), Approx. 6.5A; Low (5W), Approx. 3.0A. Receiving: At max audio output, Approx. 0.7A; Squelched, Approx. 0.5A ■ **Dimensions:** 1.5" (H) x 5.5" (W) x 7" (D) ■ **Weight:** Approx. 2.6 lbs. ■ **Output Power:** High 25W, Low 5W ■ **Emission Mode:** 16F3 (F3E 16K0) ■ **Modulation System:** Variable reactance frequency modulation ■ **Max. Frequency Deviation:** ±5KHz ■ **Spurious**

Emission: More than 60dB below carrier ■ **Microphone:** 600 ohm electret condenser microphone with push-to-talk and frequency UP/DOWN switches, and 16 key dual tone pad ■ **Operating Mode:** Simplex, Duplex (Any offset in-band in 100KHz increments programmable) ■ **Receiving System:** Double-conversion superheterodyne ■ **Modulation Acceptance:** 16F3 (F3E 16K0) ■ **Intermediate Frequencies:** 1st: 21.800MHz, 2nd: 455KHz ■ **Sensitivity:** Less than 0.2uV for 12dB SINAD. Less than 0.4uV for 20dB Noise quieting ■ **Squelch Sensitivity:** Less than 0.15uV ■ **Spurious Response Rejection Ratio:** More than 60dB ■ **Selectivity:** More than 15KHz at -60dB point, Less than 30KHz at -60dB point ■ **Audio Output Power:** More than 2.0W ■ **Audio Output Impedance:** 4 — 8 ohms

IC-37A MOBILE

- 220 - 225MHz
- 9 Memories
- Scanning
- 32 PL Tones
- 25 Watts
- Internal Speaker
- 12 VDC

Suggested Retail Price: \$449



6-Meter/SSB/CW/FM (Opt)

ICOM's IC-551D transceiver makes operating on the 6-meter band a snap. The IC-551D has many unique and convenient features

providing ease of operation. This all-mode 6-meter unit includes a built-in microprocessor for frequency control and scanning. The no

backlash, no delay dual VFO light chopper system is included as a standard feature at no extra cost. This provides split frequency operation as well as completely variable offset.

Included as standard are three memories to store your desired frequencies. With its unique squelch on sideband system, the IC-551D can scan the memories looking for band openings silently. Two tuning rates are provided in 10KHz or 1KHz steps at the touch of a button.

Standard features include: Two VFO's...variable output from 1 to 80 watts. Dial lock switch...Pulse noise blanker...and, Variable scan

speed.

The FM is optional.

Some Specifications:

■ **Frequency Coverage:** 50.000MHz — 53.999MHz ■ **Dimensions:** 4.4" (H) x 9.5" (W) x 13" (D) ■ **Weight:** 14.5 lbs. ■ **RF Output Power:** SSB 80W PEP (1 - 80W adjustable), CW 80W (1 - 80W adjustable), AM 40W (0 - 40W adjustable), FM 80W (1 - 80W adjustable) ■ **Receive IF:** SSB, CW, AM 9.0115 MHz (2nd IF 10.75 MHz, 3rd IF 9.0115 MHz w/PBT unit), FM 1st 9.0115MHz, 2nd 455 KHz ■ **Sensitivity:** SSB, CW, AM, less than 0.5 microvolts for 10dB S+N+D/N+D, more than 30dB S+N+D/N+D at 1 microvolt, less than 0.6 microvolts for 20dB, noise quieting

Suggested Retail Price: \$699

IC-551D BASE

- 50-54MHz
- 3 Memories
- Dual VFO's
- Scanning
- Microprocessor Controlled
- 12 VDC Operation

ICOM ACCESSORIES

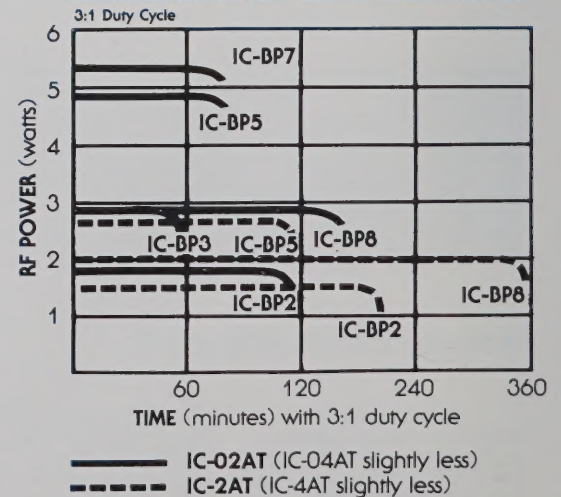
	HF										VHF										UHF						DUAL			6-MTR			220			
	720A	730	735	745	751	R70	R71A	251A	271A	271H	22U	25A	25H	27A/H	290A	290H	2025	451A	471A	471H	45A	490A	47A	402	3200A	551D	505	120	1271	3010	1210	37A				
Amplifier	2KL	2KL	2KL	2KL	2KL											20L								J0L												
Antenna Tuners	AT500 AT100	AT500 AT100	AT500 AT100	AT500 AT100	AT500 AT100																															
Ext. Speakers	SP3	SP3	SP3 SP4 SP5 SP10	SP3	SP3	SP3	SP3	SP3	SP3	SP3	SP4 SP5	SP4 SP5	SP4 SP5	SP4 SP5 SP10	SP4 SP5	SP4 SP5	SP4 SP5	SP3	SP3	SP3	SP3	SP4	SP4 SP5 SP10	SP3	SP3	SP4	SP4	SP4	SP4	SP4	SP4	SP4	SP4			
Phone Patch	Yes	Yes	Yes	Yes	Yes																															
Preamplifiers									AG20	AG25										AG1	AG35	AG1	AG1		AG1											
Memory Backup	BC10	BC10	STD	STD	STD	STD	STD		STD	STD	BU1	BU1	STD	BU1	BU1				STD	STD	BU1	BU1	STD	STD	STD	STD	STD	STD	STD	STD	STD	STD				
Power Cord Supplied STD	DC	DC	DC	DC	DC	AC	AC	ACC-DC	DC	DC	DC	DC	DC	DC	DC	DC	ACC-DC	DC	DC	DC	DC	DC	DC	DC	DC	DC	DC	DC	DC	DC	DC	DC	DC			
Mobile Mounts	M05	M05	M05	M012	M016	M012	M012	M05	M012	M012	M06	M010	M010	M027	M09	M09	M02	M05	M012	M012	M010	M09	M027	M02		M05		M010								
Recommended ICOM External Power Supplies:																																				
3P5																	Yes							Yes												
PS15*	Yes	Yes	Yes	Yes	Yes				Yes	Yes									Yes	Yes																
PS20*																										Yes										
PS30	Yes	Yes	Yes	Yes	Yes	Yes	Yes	Yes	Yes	Yes	Yes	Yes	Yes	Yes	Yes	Yes	Yes	Yes	Yes	Yes	Yes	Yes	Yes	Yes	Yes	Yes	Yes	Yes	Yes	Yes	Yes	Yes	Yes	Yes		
PS45						Yes	Yes	Yes			Yes	Yes		H No	Yes	Yes		Yes	Yes	Yes	Yes	Yes	Yes	Yes	Yes	Yes	Yes	Yes	Yes	Yes	Yes	Yes	Yes	Yes		
PS55	Yes	Yes	Yes	Yes	Yes				Yes	Yes									Yes	Yes																
Microphones:																																				
HM3																									STD											
HM4																																				
HM5 (Noise Cancelling)																																				
HM7	STD	STD						STD			STD				STD	STD		STD						STD			STD									
HM8 (TT)											OPT	STD			OPT	OPT	STD	OPT						STD			OPT									
HM10 (Scanning)		OPT						OPT			OPT	OPT			OPT	OPT		OPT																		
HM11 (Scanning)											OPT	OPT																								
HM12			STD	STD	STD			STD	STD		OPT	OPT		OPT					STD	STD	OPT		OPT		OPT			OPT	OPT	OPT	OPT	OPT	OPT	OPT		
HM14 (Scanning, 16 Button Touchtone*)		OPT	OPT	OPT				OPT	OPT		STD	STD		STD	STD				OPT	OPT	STD			STD			STD	STD	STD	STD	STD	STD	STD	STD		
HM15																																				
HM23														STD																						
SM2 (Desk)																									OPT											
SM5 (Desk)	OPT	OPT						OPT			OPT	OPT																								
SM6 (Desk)			OPT	OPT				OPT	OPT		OPT	OPT																								
SMB	OPT	OPT						OPT	OPT		OPT	OPT																								
Internal AC Supply						STD	STD	STD	OPT	OPT																										
Cabinet																																				
Duplexer																																				
HP-1 (Headphones)	OPT	OPT	OPT	OPT	OPT	OPT	OPT	OPT	OPT	OPT																										

HANDHELD BATTERY PACK DATA

BATTERY PACK MODEL	HEIGHT	CHARGER REQUIRED	BATTERIES	VOLTAGE	TYPICAL WATT OUTPUT (02A SERIES)	TYPICAL WATT OUTPUT (2A SERIES)	REPLACEABLE BATTERIES	NOTES
IC-BP2	39mm 1.6 in.	BC-30 or BC-35	N-425 AR (x6)	7.2	2.0	1.0	No	Low Power/Quick Charge (1.5h) Long Life/Overcharge protected
IC-BP3	39mm 1.6 in.	BC-25U BC-30 or BC-35	N-250 AA (x7)	8.4	3.0	1.5	No	Standard Power/ Standard Charge (1.5h)
IC-BP4	49mm 2.0 in.		UM-3 (x6)	9.0	3.0	2.5	Yes	Standard Power/No Recharge capability
IC-BP5	60mm 2.6 in.	BC-30 or BC-35	NiCd AA (x6)	7.2	2.0	1.0	Yes	Low Power/Long Life Standard Charge (1.5h)
IC-BP7	79.5mm 3.2 in.	BC-16U or BC-35	N-425 AR (x9)	10.8	5.0	2.5	No	Medium Power/Long Life Quick Charge (1.5h)/overcharge protected
IC-BP8	79.5mm 3.2 in.	BC-16U or BC-30 or BC-35	N-800 AR (x7)	8.4	3.0	2.5	No	Standard Power/Long Life (800mAh)

All stated specifications are approximate and subject to change without notice or obligation.
All ICOM radios significantly exceed FCC regulations limiting spurious emissions.

APPROXIMATE BATTERY LIFE vs. POWER OUTPUT



**INTERNALLY MOUNTED OPTIONS
TRANSCIVERS/RECEIVERS**

FILTERS:

500Hz 455KHz CW narrow crystal
 500Hz 9MHz CW narrow crystal
 270Hz 9MHz CW narrow crystal
 250Hz 455KHz CW narrow crystal
 250Hz 9MHz CW narrow crystal
 (replaces FL32 - R70, R71A)
 5.2KHz 9MHz AM
 2.1KHz 9MHz SSB (PBT)
 2.4KHz 455KHz SSB Hygrade
 2.8KHz 455KHz SSB
 CW Audio Filter (150Hz/6dB)

OTHER:

Internal AC Power Supply
 12V DC Operation
 Internal NiCd Battery Pack
 Internal Lithium Memory Backup

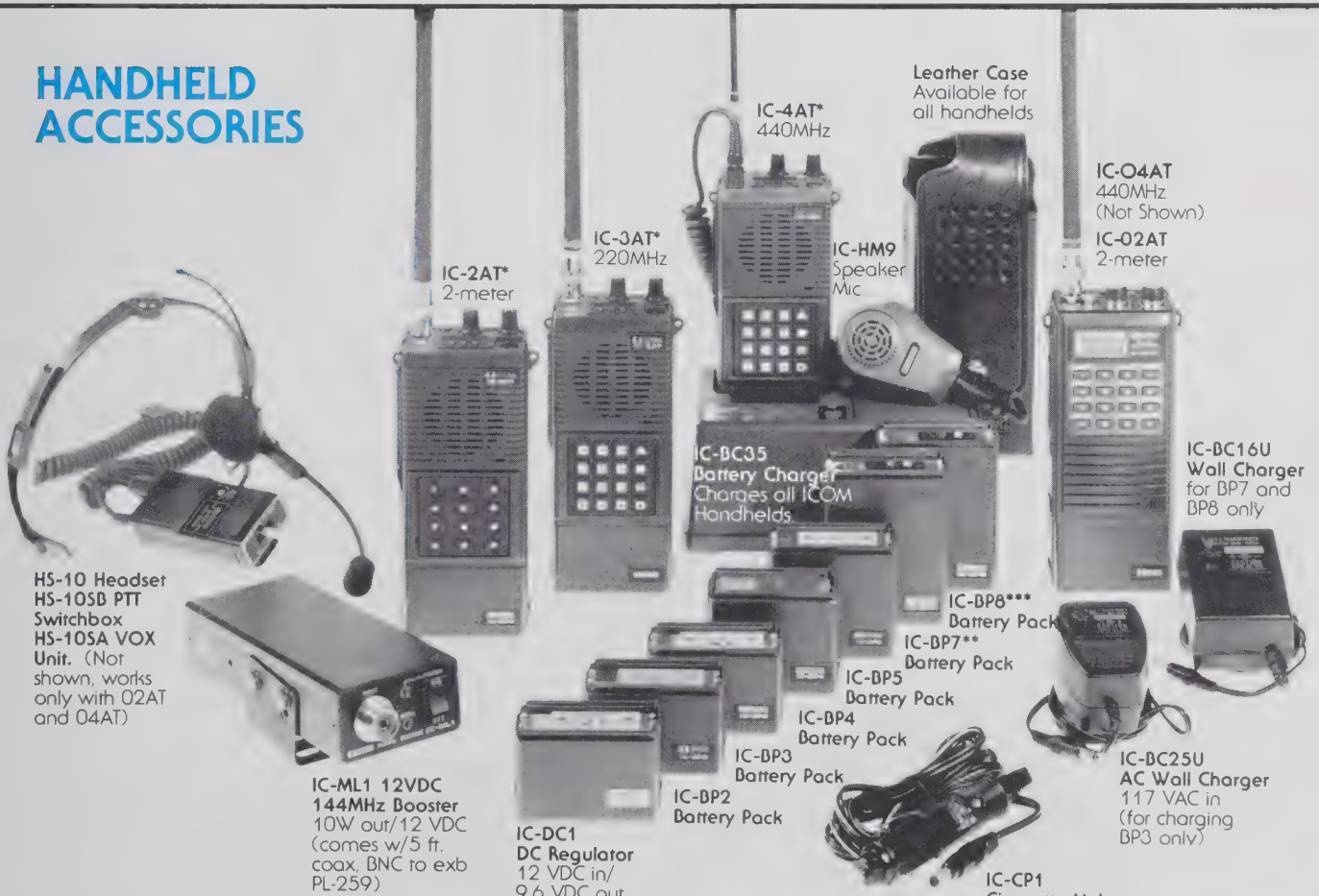
OTHER OPTIONS:

Marker
 Transverter switching unit
 FM Option
 Electronic Keyer Option
 LDA (Channeling adapter for
 2KL/AT100/AT500/AH1)
 High Stability XTAL
 Voice Synthesizer
 Tone Squelch
 Keypad Frequency Entry
 Remote Keypad

	IC-271A	IC-271H	IC-471A	IC-471H	IC-505	IC-551D	IC-701	IC-720A	IC-730	IC-735	IC-740	IC-745	IC-751	IC-R70	IC-R71A
FL32								FL32			FL52	FL52A	FL52A		
FL45								FL45			FL45	FL45	FL45	STD	STD
FL54								FL54			FL54	FL54	FL54		
FL53								FL53			FL53	FL53A	FL53A		
FL63								FL63			FL63	FL63	FL63	FL63	FL63
FL34							FL34				FL33	FL33	FL33	STD	STD
FL30						STD	STD	FL30		STD	STD	STD	STD	STD	STD
FL44A								FL44A		STD	FL44A	FL44A	FL44A	FL44A	FL44A
EX203								EX203			CF4455K	FL70	FL70		
PS25	PS25	PS35	PS25	PS35							PS740	PS35	PS35	STD	STD
STD	STD	STD	STD	STD	STD	STD	STD	STD	STD	STD	STD	STD	STD	CK70	CK70
BP10					BP10										
AA CELL BACKUP					AA CELL BACKUP										
EX195								EX195	STD	EX241	EX241	STD			
EX205								EX205	STD	STD	STD	STD			
EX242				EX248	EX106			EX242	STD	EX242	EX242	STD		EX257	EX257
EX243								EX243	STD	EX243	EX243	STD			
STD								STD		STD	STD	STD			
*STD								*STD							
EX202								EX202							
CR64											CR64	CR64			CR64
EX310	EX310	EX310	EX310	EX310								EX310			EX310
EX337	EX337	EX337	EX337												
													RC10		RC11

* IC-720 requires EX182 LDA unit.

**HANDHELD
ACCESSORIES**



*Also available without Touchtone™ pad.
 **Do not use BP7 with 2A/3A/4A Handheld Series.
 ***BP8 may be used with 2A/3A/4A Handheld Series.

ICOM ACCESSORIES (CONT.)

IC-2KL LINEAR AMPLIFIER

- 117/220 VAC
- Autotuning
- Broadbanded



HF 500 Watt Linear

IC-2KL solid-state amplifier by ICOM features all solid-state broadband tuning with fully protected finals and automatic band switching, when used with the IC-701, IC-720A, IC-751, IC-745, or IC-730, plus full metering.

500 watts of output power give the needed punch, in a small package, to make those QSO's when the going really gets rough. ICOM's exclusive heat pipe cooling system allows smaller construction than comparable linear amplifiers,

and provides exceptional protection of the final system.

The IC-2KL provides 500 watts of power output on 160 thru 15 meters, including the new 18 and 10MHz bands.

Some Specifications:

■ **Frequency Range:** 1.8: 1.8MHz - 2.0MHz 3.5: 3.5MHz - 4.1MHz 7: 6.9MHz - 7.5MHz 10: 9.9MHz - 10.5MHz 14: 13.9MHz - 14.5MHz 18-21: 17.9MHz - 21.5MHz ■

■ **Emission Modes and Duty Cycle:** SSB :30 minutes max. with normal voice CW, RTTY: Key down 10 minutes max. ■ **Driving Power:** 50W - 80W ■ **Rated Nominal Output Power:** SSB 500W PEP, CW

500W, RTTY 500W ■ **Protection Functions:** Against: Mismatching, overheating, overcurrent, overdriving, over-output power, PA units unbalancing ■ **Power Supply Requirement:** 40V DC+3V, negative ground, current drain 23A max. (at 500W output), attendant AC power supply IC-2KLPS is required ■ **Dimensions:** 111mm (H) x 241mm (W) x 300mm (D) ■ **Weight:** 6.9kg ■ **Power Supply (IC-2KLPS) Primary Power Requirement:** Strappable for: 117V/240V + 10% 50 60Hz (100V/200V/220V use requires internal modification) 1.6kVA ■ **Output Voltage:** 40V DC+3V negative ground ■ **Output Current:** 25A continuous 10 minutes max.

Suggested Retail Price: \$1795

IC-AT500 IC-AT100 HF ANTENNA TUNERS

- 117 VAC or 12 VDC
- Auto band-switching
- Autotuning



Automatic HF Antenna Tuners 500 and 100 Watt Models

The IC-AT500 and the IC-AT100 Automatic Antenna Tuners provide automatic adjustment of the ICOM HF transceivers to the transmission line. Working at 500 and 100 watt levels respectively, the IC-AT500/100 detects the resistance and reactance of

the load presented by the transmission line. Powerful motors tune the two variable capacitors, so that the tuner presents a 50 ohm non-reactive load to the transceiver.

These tuners, when attached to ICOM radios such

as the IC-720A, ICOM IC-730 (with the optional LDA unit installed) or the IC-701, feature automatic band switching, changing bands to correspond with the band selected on the transceiver.

The tuner has dual accessory sockets so that information from the transceiver may be transferred to the tuner, as well as the IC-2KL amplifier for automatic channeling of all three units at once.

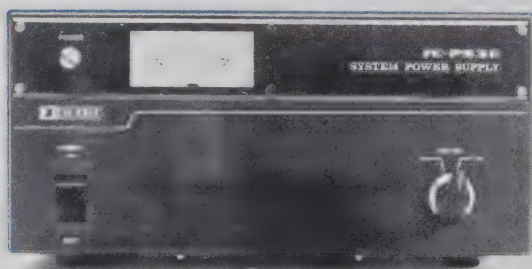
The IC-AT500/100 selects one of four antennas, automatically giving the proper antenna for the band in use. When the power is turned off, this tuner can be used as an automatic antenna

selector. These tuners exhibit preset capability which allows the capacitors to move to a position near the actual operating position, so that QSY can be made quickly and receiving capability will not be interrupted. Presence of RF is not necessary for the preset capability function. Application of RF to the IC-AT500/100 will cause the matching circuit to adjust the variable capacitors to fine tune the circuit for a perfect match. (160—10 meters) (160 meters not available in AT100).

This tuner can be used with either 13.8 volts or 110 volts AC or 230 volts AC. IC-AT500 \$449.00/IC-AT100 \$349.00.

IC-PS30 SYSTEM POWER SUPPLY

- Supplies up to 4 ICOM Units
- Full Metering
- 25A Capacity
- Fully Regulated
- Fully Protected



The IC-PS30 is a high technology switching power supply designed by ICOM to supply a complete station of ICOM equipment.

This rugged 25 Amp power supply is designed to

match ICOM's amateur communications equipment and styled to bring the power supply up off the floor and into view for operator convenience. Metering of the output voltage and total current

consumption from the power supply is standard and allows monitoring to immediately detect a station malfunction or misconnection.

Up to four pieces of ICOM equipment may be connected to the IC-PS30 and run at the same time, eliminating the need for an independent AC power supply for each rig.

Each piece of equipment may be connected to the supply through its own DC power cord by using the supplied connectors. Additional optional cables with plugs for the transceiver and power supply are available.

Some Specifications:

■ **Number of Semiconductors:** Transistor - 5, IC - 2, Diode - 9
 ■ **Input Voltage:** 117/240VAC (50/60Hz) ■ **Allowable V. Fluctuation:** ±10% of input voltage (suitable line voltage) ■ **Input Capacity:** 430W (at 24A load)
 ■ **Output Voltage:** 13.8V ■ **Max. Load Current:** 25A (10 min. ON/10 min. OFF 50% duty cycle)
 ■ **Polarization:** Negative ground
 ■ **Dimensions:** 110mm(H) x 241mm(W) x 300mm(D)
 ■ **Weight:** Approximately 5.0kg
 ■ **Accessories Included:** Spare fuse (10A for 117V, 5A for 240V) - 2, 2P Connector housing - 3, Connector's pin - 6

Suggested Retail Price: \$259.95

ALSO AVAILABLE



MT100 Manual Antenna Tuner

Rated at 100 Watts CW, this antenna tuner is available from ICOM America, Inc., and provides dual meters for the easiest and most accurate tuning for minimum SWR. Coaxial output is available, as is long wire. Usable on the amateur bands with amateur antennas or long wires. Size:

7.1"W x 4.7"H x 11.5"D.

Suggested Retail Price: \$249.00



PP-1 Phone Patch

Available from ICOM America, Inc. is a phone patch for use with ICOM HF, VHF and UHF base station equipment. Models are available for the IC-701, IC-720A, IC-730, IC-740, IC-751 and IC-745. Station microphone is plugged into the back of the phone patch; the phone patch connects to

the microphone connector on the front of the unit as well as the external speaker jack. The speaker inside of the phone patch becomes a station speaker. Specify HF model when ordering. Size: 7.1"W x 4.7"H x 11.5"D.

Suggested Retail Price: \$139.00

HF ACCESSORIES



- PS35 Internal Power Supply 751/745
 - PS55 External Power Supply for 735
 - SM8 Desk Mic
 - PS15 External Power Supply
- (Other Items Available. See Accessory Chart Page 9)

VHF/UHF ACCESSORIES



- AG20 Preamp 271A
 - Filters
 - Mics
 - HM12/ 14
 - PS25 Internal Power Supply 271A/471A
- (Other Items Available. See Accessory Chart Page 9)

MOBILE ACCESSORIES



- HM8 DTMF Mic
 - HM10 Scanning Mic
 - DCPC Specify Model
 - MB Specify Model!
- (Other Items Available. See Accessory Chart Page 9)

ICOM ACCESSORIES (CONT.)

PRICES

	MODEL	SUGGESTED RETAIL	DESCRIPTION
AMPLIFIERS:	IC-2KL w/PS	\$1795.00	15-160M Standard Solid State Amplifier - IC-701/720/730/740/745/751
	ML1	89.00	2.3-10W MBL Booster - IC-2A/2AT
	ML12	339.00	10W FM Booster, 1W in, 1.2GHz
	ML25	199.50	20W Booster - IC-2A/2AT/02AT/04AT
HF ANTENNA TUNERS (701/720/720A/730/740/745/751):	AT100	349.00	Automatic Antenna Tuner - 100W, 12V or AC
	AT150	349.00	Automatic Antenna Tuner
	AT500	449.00	Automatic Antenna Tuner - 500W, 12V or AC
SPEAKERS:	SP3	49.50	Base Station External Speaker
	SP4	24.95	Remote Speaker for Portable
	SP5	25.00	Remote Speaker for Mobiles
	SP10	29.95	4 ohm Speaker for IC-27A(H)/37A/47A
POWER SUPPLIES:	OPC045	5.50	Optional Cord PS30 to 6-Pin
	OPC052	5.50	Optional Cord PS30 to 2-Pin
	OPC053	5.50	Optional Cord PS30 to 4-Pin
	OPC118	TBA	24 Pin Adapter Cable - IC-735
	PS15	149.00	12V Power Supply - IC-720/730/740/745/751/271/471
	PS25	99.00	Internal Power Supply - IC-271A/471A
	PS30	259.95	External Power Supply (requires optional cord - OPC052/053 or 045 - listed above)
	PS35	160.00	Internal Power Supply - IC-745/751/271H/471H
	PS45	112.95	External Power Supply - IC-120/22U/25A/25H/27A/27H/290A/290H/37A/45A/47A/490A
	PS55	160.00	External Power Supply - IC-735
	PS740	159.00	Internal Power Supply - IC-740
	ALL OTHER ACCESSORIES:	ACPC (OPC034)	\$ 5.75
AG1		89.00	External Mast-Mounted Preamp. for use with IC-451A/471A
AG20		56.95	Preamp. for use with IC-271A
AG25		84.95	External Mast-Mounted Preamp. for use with IC-271H
AG35		84.95	External Mast-Mounted Preamp. for use with IC-471H
AH1		289.00	3-28MHz 5 Band Mobile Antenna with Tuner
AH32		32.95	Dual Band Antenna for use with IC-3200A
BC10		8.50	Memory Backup - IC-551D/720A/730/740
BC15		12.50	AC Charger - IC-505
BC16U		10.00	Wall charger - IC-BP7/BP8
BC25U		10.00	Wall Charger - IC-BP3 Battery Pack
BC35		69.00	Drop-in Desk Charger - All Batteries
BP2		39.50	425mAH at 7.2V NiCd Pak
BP3		29.50	250mAH at 8.4V NiCd Pak
BP4		12.50	Alkaline battery case
BP5		49.50	425mAH at 10.8V NiCd Pak
BP7		67.50	425mAH at 13.2V NiCd Pak - IC-02AT/04AT Only
BP8		62.50	800mAH at 8.4V NiCd Pak - All handhelds
BP10		79.50	Internal NiCd Battery Pak - IC-505
BU1		38.50	Memory Backup Module - IC-290A/25A/25H/490A
CA5		18.95	3/8 Wave Telescoping Antenna - IC-2A/2AT/02AT
CA6		18.95	140MHz 1/2 Wave Telescoping Antenna
CA7		18.95	220MHz 1/2 Wave Telescoping Antenna
CC1		10.00	Adapter Cable; 751 to PS20
CF1		45.00	Cooling Fan - 701PS/PS20/PS15 with EX144
CM60		399.00	6 Position Multi-Charger - All Handheld Battery Packs
CP1		9.50	Cigarette Lighter Plug and Cord - IC-2A/2AT/02AT/04AT
CP10		17.99	Battery Separator Cable for all Handhelds
CR64		56.00	High Stability Oscillator Crystal - IC-751/R71A
DC1		17.50	DC Operation Pak - IC-2A/2AT/3A/3AT/4A/4AT
DC HD		12.50	DC Power Cord - IC-271H/551D/701/720/730/745/751 - specify
DC Power Cord		7.50	DC Power Cord - specify radio
EX2		34.00	Relay Box - IC-701/720/730 including marker
EX106		125.00	FM Option - IC-551/551D
EX107		55.00	VOX Option - IC-551 (included with 551D)
EX108		105.00	PBT - IC-551 (included with 551D)
EX144	6.50	CF1 Adapter - IC-PS15	
EX182	27.50	LDA-1 Interface Unit - 720 to 2KL/AH1 bandswitching	
EX195	39.00	Marker Unit for Frequency Calibration - IC-730	
EX199	35.00	Remote Frequency Selector - IC-22U	
EX202	27.50	LDA-2 Unit for Automatic Band Switching - IC-730	
EX203	39.00	CW Audio Filter, 150Hz/6dB - IC-730	
EX205	29.00	TRV Unit for Transverter Switching - IC-730	
EX241	20.00	Marker Unit - For Frequency Calibration - IC-740/745	
EX242	39.00	FM Unit - IC-740/745	
EX243	50.00	Electronic Keyer Unit - IC-740/745	
EX248	49.50	FM Unit - IC-505	

PRICES (Continued)

EX257	38.00	FM Unit - IC-R70/R71A
EX270	39.00	Encoder - IC-45A
EX299	9.95	12 Volt Option - IC-R70/R71A
EX309	37.00	Microprocessor Interface Connector - IC-271A/271H/471A/471H/751/R71A
EX310	39.95	Voice Synthesizer - IC-751/271A/471A/271H/471H/R71A
EX339	88.50	DTMF decoder IC-RP1210/RP3010
EX390	4.95	Bottom Slide Cap
FA1	9.50	Flexible Antenna - IC-215
FA2	10.00	Flexible Antenna - IC-2A/2AT/02AT (BNC)
FL30	59.50	SSB Passband Tune Crystal Filter - IC-730
FL32A	59.50	CW Filter, 500Hz 9MHz - IC-720A/751/R71A
FL33	31.50	AM Filter, 6.0KHz 9 MHz, - IC-751
FL34	49.50	AM Filter - IC-720A
FL44	159.00	2.4KHz 455KHz SSB Crystal Filter - IC-730/740/R70/R71A
FL44A	159.00	455KHz SSB Crystal Filter - IC-730/740/745/R70/R71A
FL45	59.50	CW Narrow Crystal Filter - IC-730/740/745
FL52	96.50	500Hz 455KHz CW Filter - IC-740
FL52A	96.50	500Hz 455KHz CW Filter - IC-745/751
FL53	96.50	250Hz 455MHz CW Filter - IC-740
FL53A	96.50	250Hz 455MHz CW Filter - IC-745/751
FL54	47.50	270Hz 9MHz CW Filter - IC-740/745
FL63A	48.50	CW Narrow Filter 250Hz, 9MHz - IC-R70/751/R71A/730/745/735/740/R70
FL70	46.50	SSB 2.8KHz Filter - IC-751
HM3	17.50	Microphone, 3 or 4 pin, specify radio
HM4	29.00	Microphone, 7 pin - IC-RP1210/RP3010
HM5	34.50	Microphone, 4 pin, Noise Cancelling
HM7	29.00	Microphone, Amplified, 8 pin
HM8	49.50	8 Pin Mic with Tone Encoder
HM9	34.50	Speaker Mic - IC-2A/2AT/3A/3AT/4A/4AT/02AT/04AT
HM10	39.50	Scanning Mic - IC-255A/260A/290A/25A/730
HM11	39.50	Scanning Mic - IC-490/25A/25H/290A
HM12	39.50	Hand Mic - IC-745/271/471/751
HM14	49.50	Scanning/Touchtone Mic - IC-45A
HM23	49.50	Hand Mic - IC-27A/27H/37A/47A
HP1	34.50	Headphone
HS10	19.50	Optional Headset for Handhelds
HS10SA	19.50	VOX Unit for Handheld use w/HS10 - IC-04AT/02AT only
HS10SB	19.50	PTT Switch Box for Handheld use w/HS10 - All Handhelds
HS15	28.00	Mobile Microphone - All Mobile Units
HS15SB	21.00	PTT Switchbox for mobile use for - HS-15 or HS-10
LC02AT	39.95	Leather Carrying Case - IC-02AT/04AT w/ BP7 and BP8 battery pack
LC2AT	34.95	Leather Carrying Case - IC-2AT w/BP3 battery pack
LC10	34.95	Carrying Case - IC-505
LC11	17.95	Vinyl Carrying Case - IC-02AT/04AT w/BP3 battery pack
LC14	17.95	Vinyl Carrying Case - IC-04AT/02AT w/BP7 and BP8 battery packs
Owners Manual	7.50	Any Manual UHF, VHF - Specify Model
Owners Manual	10.00	Owners Manual HF, Receivers - Specify Model
Service Manual	20.00	Service Manual, Handheld/Mobile - Specify Radio
Service Manual	25.00	Service Manual, Base - Specify Radio
MB2	19.50	Mobile Mounting Bracket - IC-502/215/402/202
MB5	19.50	Mobile Mounting Bracket - IC-451/251/551/551D/701/720/730/211/735
MB6	19.50	Mobile Mounting Bracket - IC-22U/22S/280/245/230
MB7	19.50	Mobile Mounting Bracket - IC-245 Sideband
MB8	19.50	Mobile Mounting Bracket - IC-255/260/560
MB9	19.50	Mobile Mounting Bracket - IC-290
MB10	19.50	Mobile Mounting Bracket - IC-25A/25H/3200A
MB12	19.50	Mobile Mounting Bracket - IC-740/R70/745/R71A
MB17	19.50	Mobile Mounting Bracket - IC-27A/37A/47A
MB18	19.50	Mobile Mounting Bracket - IC-751
PS20/PS15 Cable (CC1)	10.00	Adapter Cable for PS20 - IC-720A/730
Phone Patch	139.00	Phone Patch - IC-701/720/730/740/745/751 - Specify Model
RC10	35.00	10 Key Frequency Control - IC-751 Only
RC11	59.95	Infrared Remote Controller - IC-R71A
RC12	TBA	Infrared Remote Control - IC-R7000
RM2	149.00	Keyboard Frequency Controller - IC-211/245/701
SM2	39.00	Desk Mic, 4 Pin - IC-211/551/551D/701
SM5	39.00	8 Pin Base Mic - IC-251A/255A/260A/720/730/290/451/25A/25H
SM6	39.00	Desk Mic - IC-271A/271H/471A/471H/745/751
SM8	69.96	Desk Mic - two cables
Shoulder Strap	14.95	Handheld Shoulder Strap
TV-1200	TBA	ATV Unit for IC-1271A
UT15	12.50	Interface Board for TS32 Encoder/Decoder - IC-271A/271H/471A/471H
UT15S	79.95	Interface Board with TS32 Encoder/Decoder - IC-271A/271H/471A/471H
UT16 (EX388)	29.95	Voice Synthesizer - IC-27A/37A/47A/27H
UT23	29.95	Voice Synthesizer - IC-3200A
3A-TTN	39.50	Optional 16-Button TT Pad - IC-2A/3A/4A
IC-7072	112.50	Transceiver Unit - IC-720A/R70

	BASE	MOBILE	HANDHELD	PORTABLE	AMPLIFIERS	RECEIVERS	REPEATERS
HF	745 (160-10M) w/Gen. Coverage RCVR/SSB/CW/RTTY/ AM/(Rx only)/ FM (option) 751 (160-10M) w/Gen. Coverage RCVR/SSB/CW/RTTY/ FM/AM	735 (160-10M) w/Gen. Coverage RCVR	---	---	2KL (Linear 500W-CW)	R71A CW/RTTY/ SSB/AM/FM Option (100KHz-30MHz)	---
6-MTR	551D - SSB/CW/ FM Option (50-54MHz)	---	---	505 3/10W (SSB/CW/ FM Option)	---	R7000 FM/AM/SSB 25-1000MHz 1.24-2.0GHz	---
2-MTR	271A 25W FM/SSB/CW 271H 100W FM/SSB/CW	27A (FM) 25W 27H (FM) 45W 290H 25W (Multimode) 3200A Dual Bander	2A (FM) 2AT (FM) 02AT (FM)	---	ML1 (FM) ML25 (FM)	R7000	---
220MHz	---	37A 25W 220MHz FM	3AT (FM)	---	---	R7000	---
440MHz	471A 25W (430-450MHz) 471H 75W (430-450MHz)	3200A Dual Bander 490A 10W Multimode (430-440MHz) 47A (FM) 25W (430-450MHz)	4AT (FM) 04AT (FM)	---	30L (Linear)	R7000	RP3010 (430-450MHz) XTAL
1.2GHz	1271A 10W (1240-1300)	120 (FM) (1260-1300)	---	---	ML12 (FM) 10W	R7000	RP1210 (1270MHz) Syn.

June 1985 Edition



Corporate Headquarters: ICOM America, Inc., 2380-116th Ave NE, Bellevue, WA 98004 (206) 454-8155
Regional Sales/Service Office: 3331 Towerwood Drive, Suite 307, Dallas, TX 75234 (214) 620-2780

All stated specifications are approximate and subject to change without notice or obligation. All ICOM radios significantly exceed FCC regulations limiting spurious emissions. ICOM AMERICA, INCORPORATED reserves the right to change, prior to notice, prices, specifications, or to discontinue models. CA885