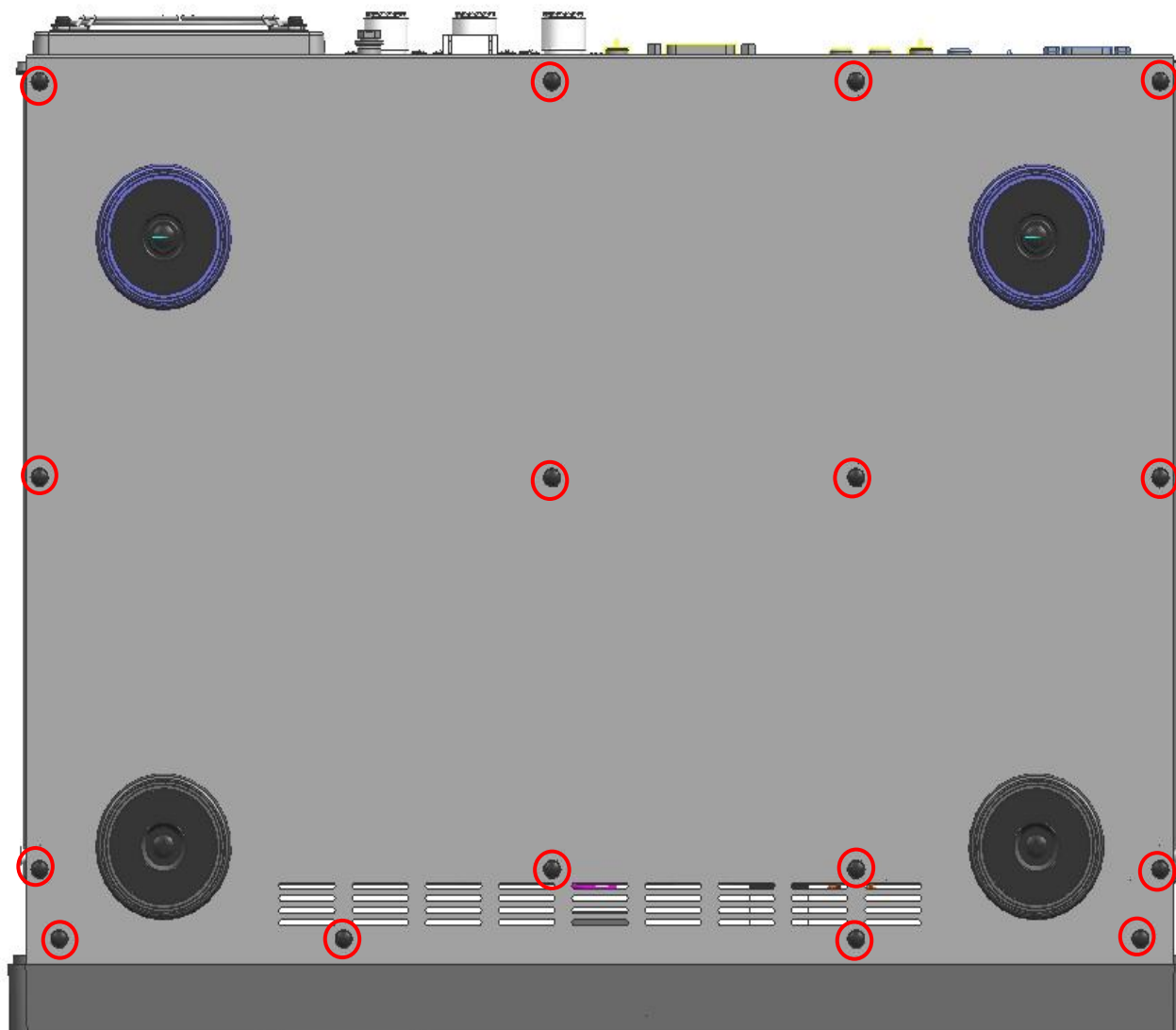




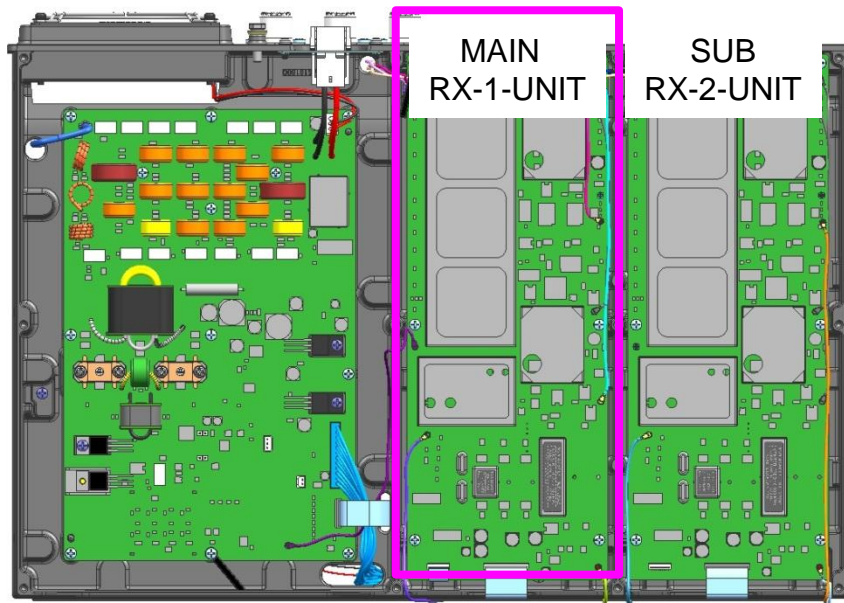
1. Remove 16 screws and open the bottom case.



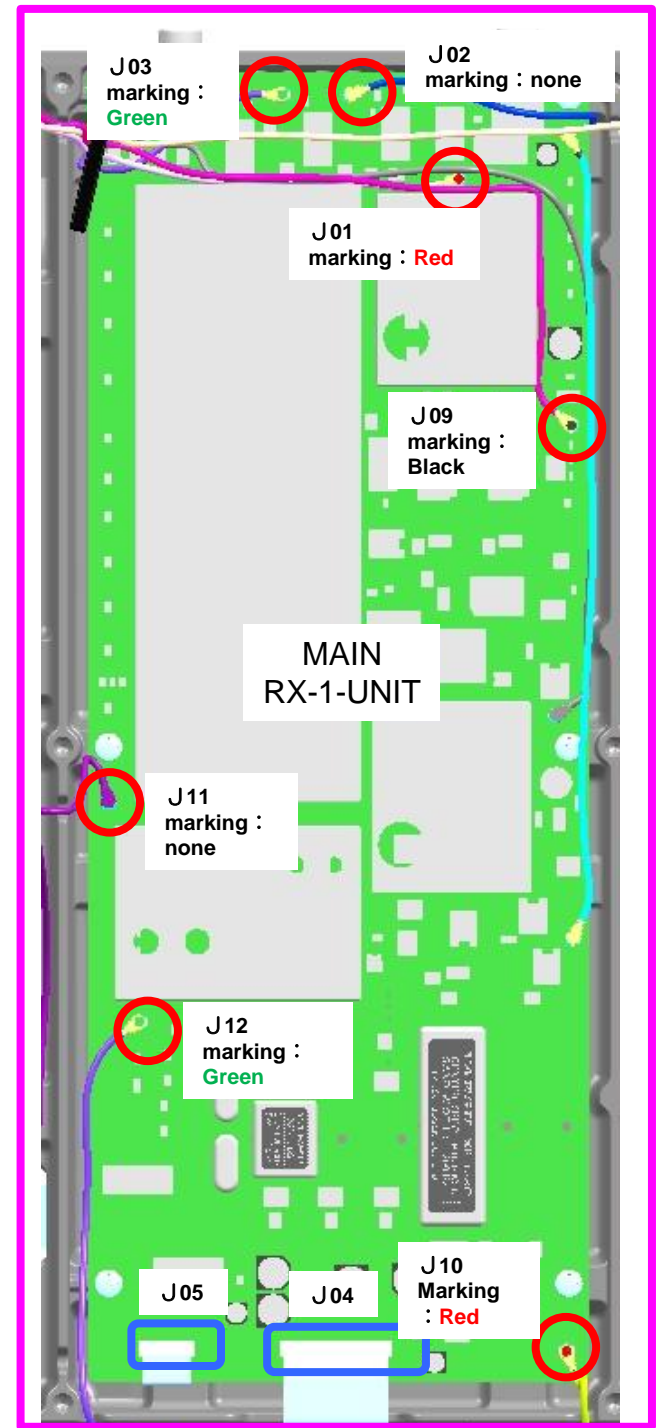
**When installing the filters (XF-128CN/ XF-128S) on the MAIN side (RX-1-UNIT)**

2.Remove 9 cables connected with the RX-1-UNIT.

-  Coaxial : 7 place
-  FFC cable : 2 place

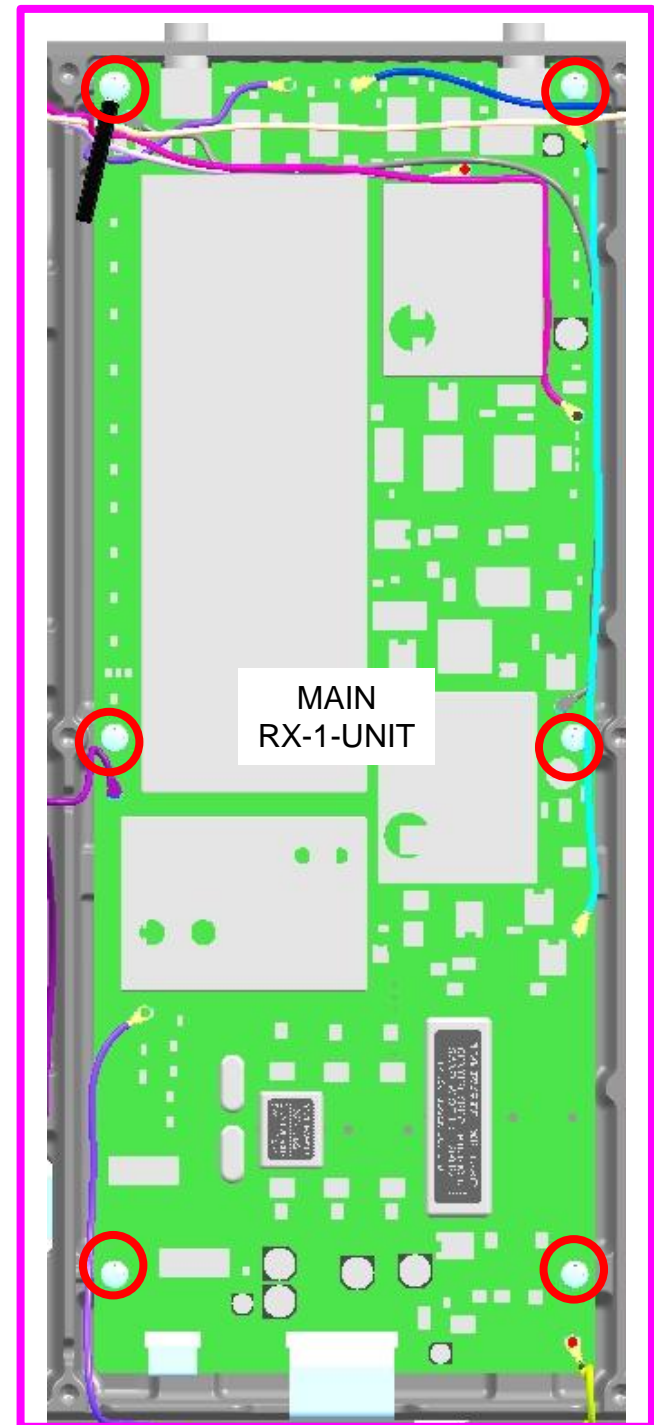
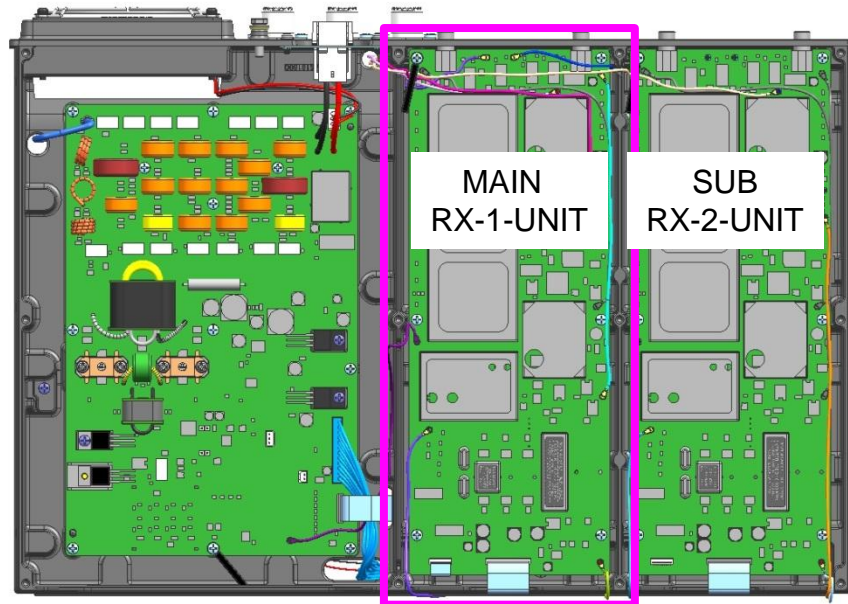


**Note: If you find it difficult to remove the coaxial cable, we may provide you with a special jig. Please contact our Technical Support desk.**



When installing the filters (XF-128CN/ XF-128SN) on the  
MAIN side (RX-1-UNIT)

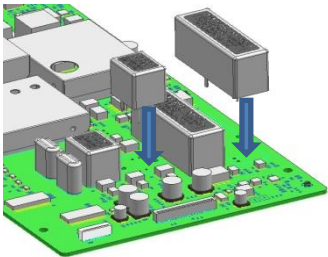
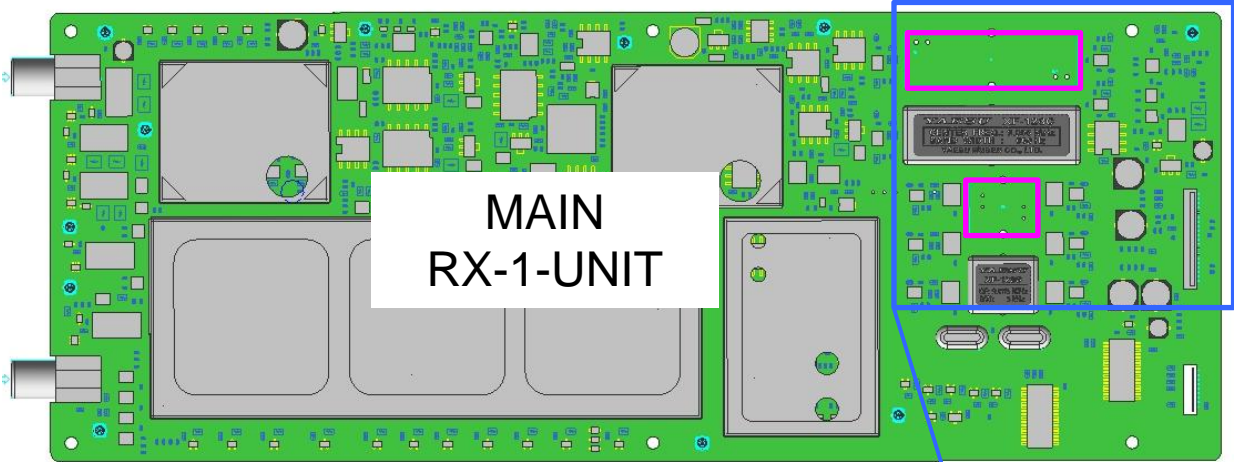
3. Remove 6 Screws and remove the RX-1-UNIT from the  
chassis.



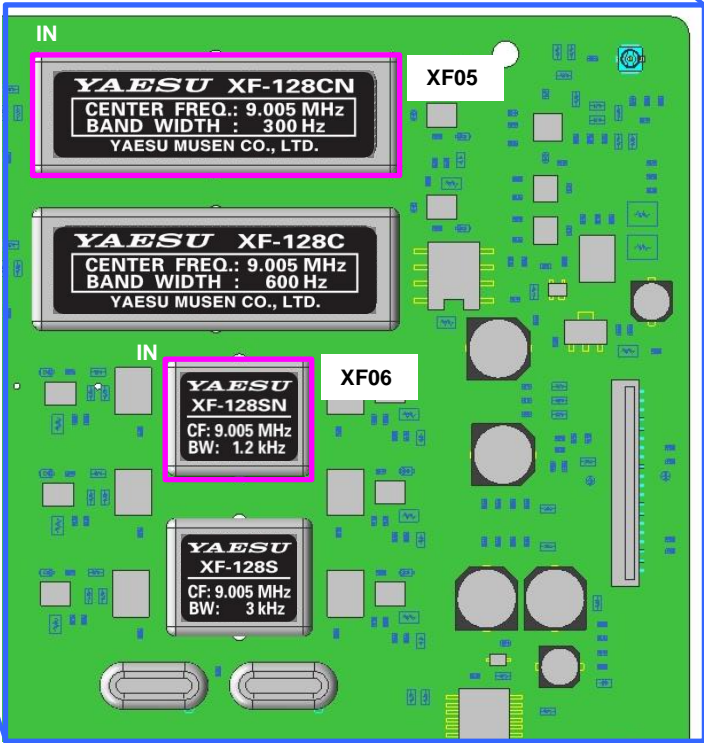
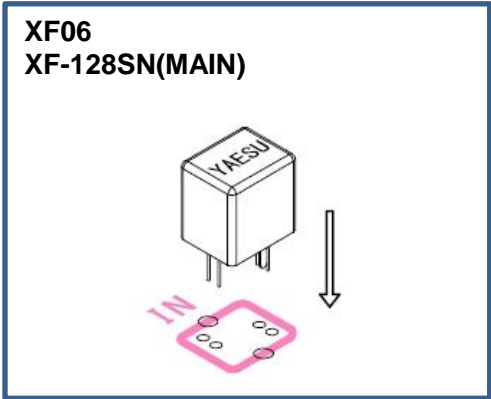
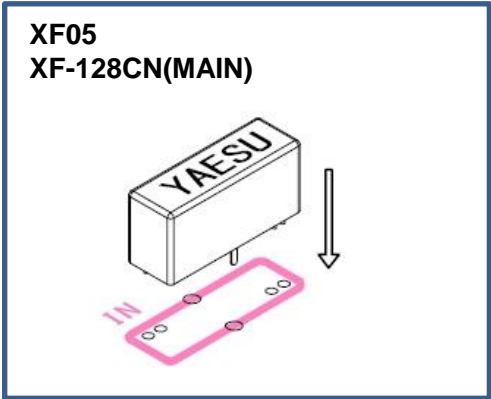
When installing the filters (XF-128CN/ XF-128SN) on the MAIN side (RX-1-UNIT)

4. Insert the filter in the specified position as shown below and solder it.

※ Cut the lead of the filters to 2.0 mm or less, after installation.



Please install the filters in correct direction.  
If installed in reverse, the performance  
quality cannot be guaranteed.

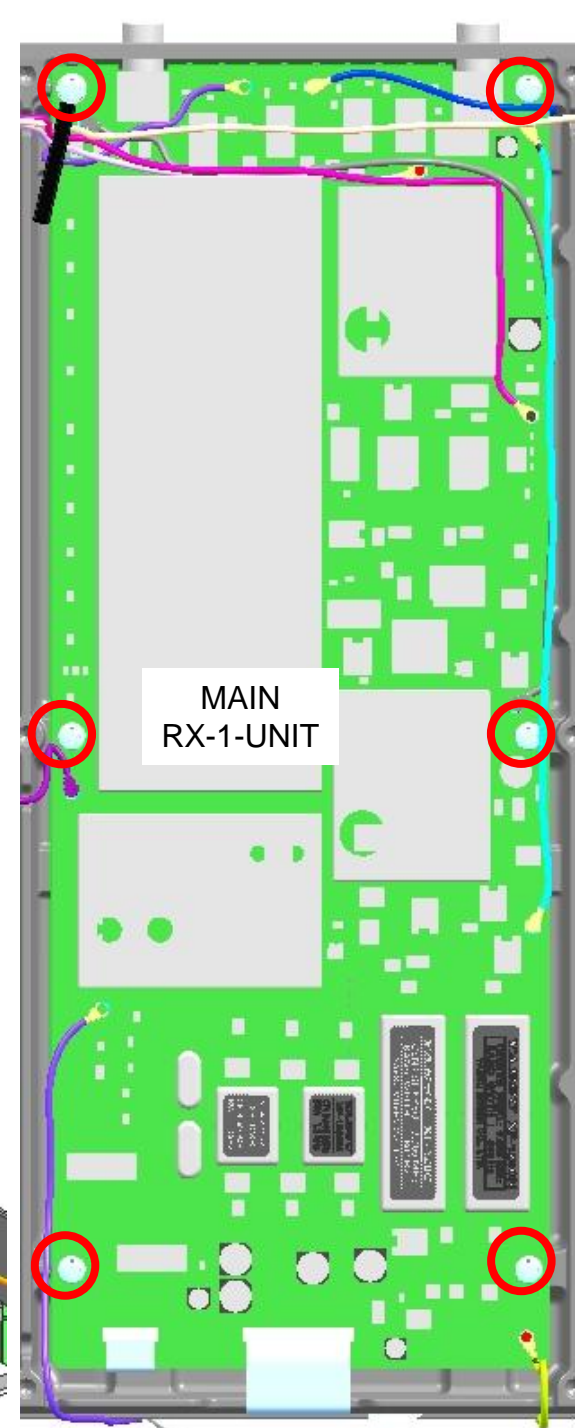
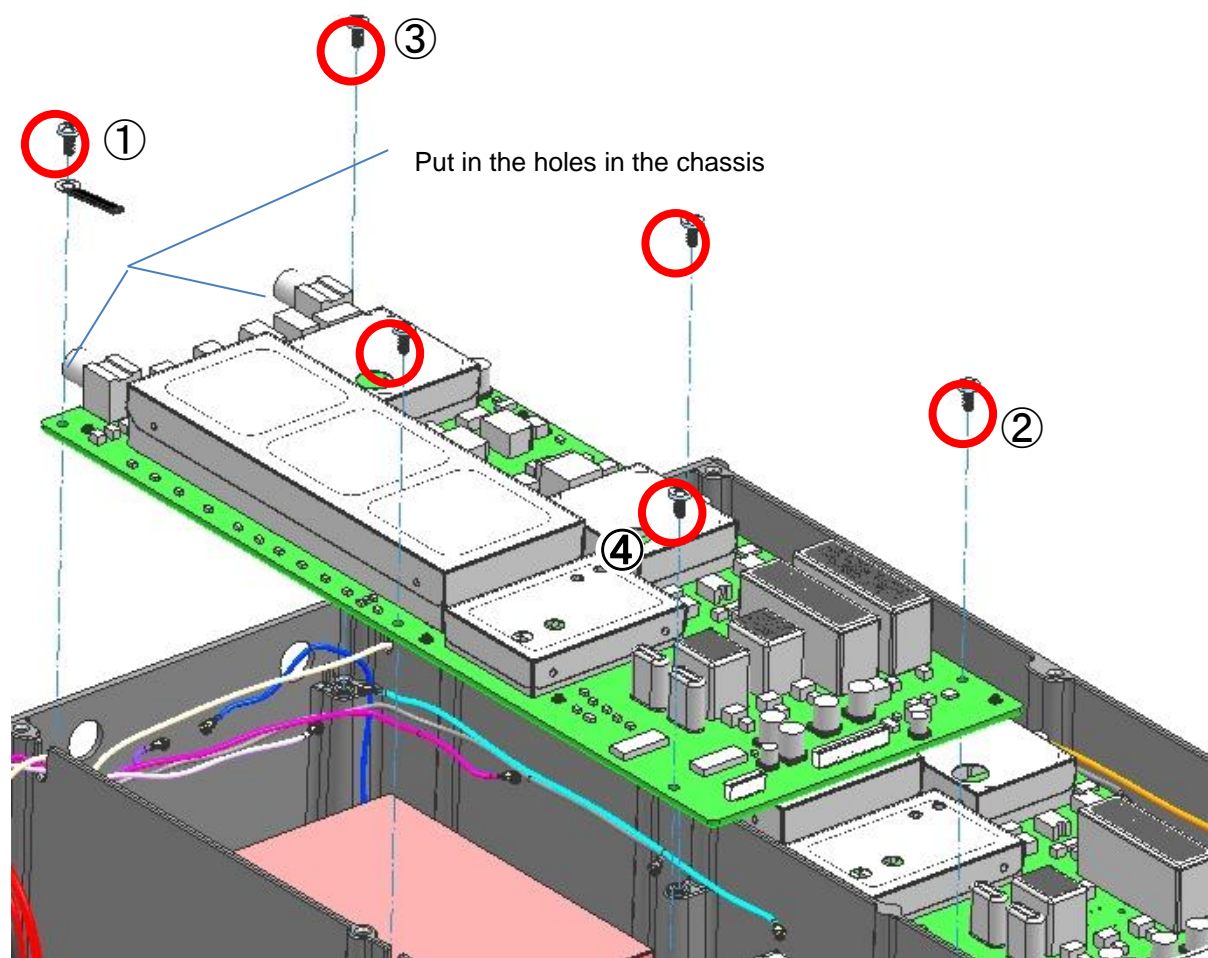




## When installing the filters (XF-128CN/ XF-128SN) on the MAIN side (RX-1-UNIT)

5. Re-assemble the RX-1-UNIT to the chassis. Fix and tighten the screws in order 1 → 2 → 3 → 4. For the rest screws, there is no specific order.

5.0kgf • cm {0.49N • m}

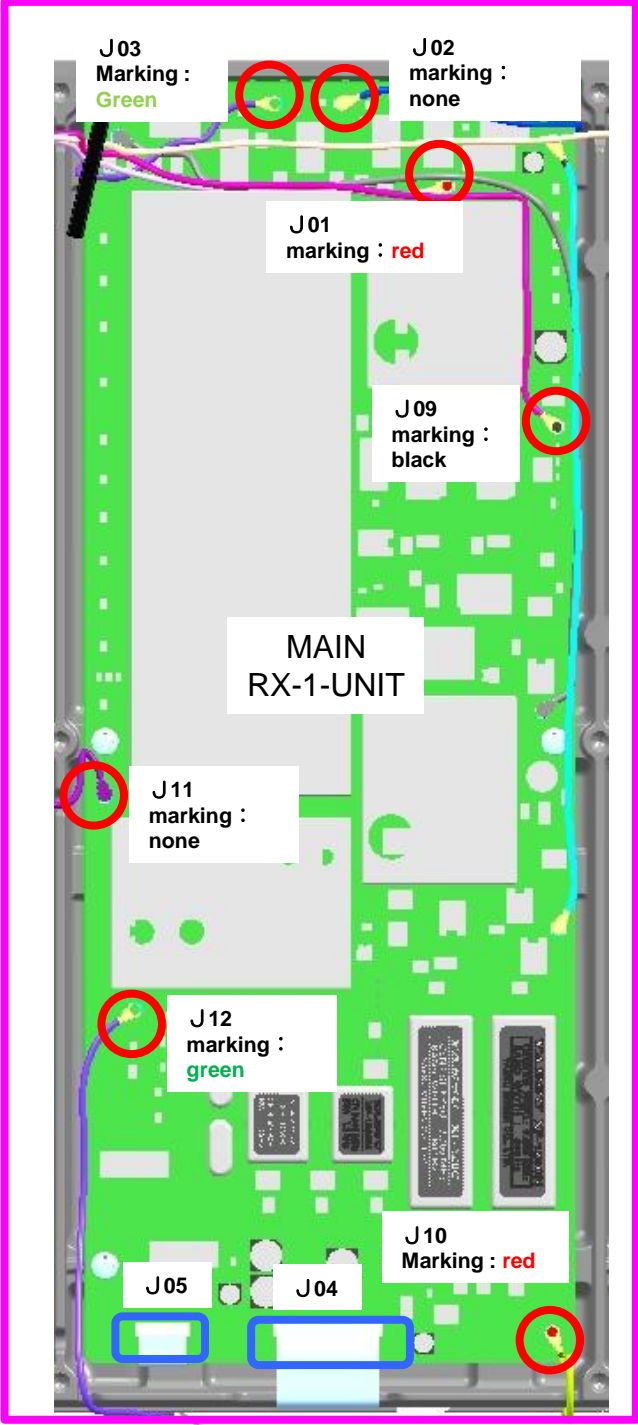


When installing the filters (XF-128CN/ XF-128SN) on the MAIN side (RX-1-UNIT)

6. Reconnect the cables to the connector of RX-1-UNIT.

- Coaxial : 7 place
- FFC cable : 2 place

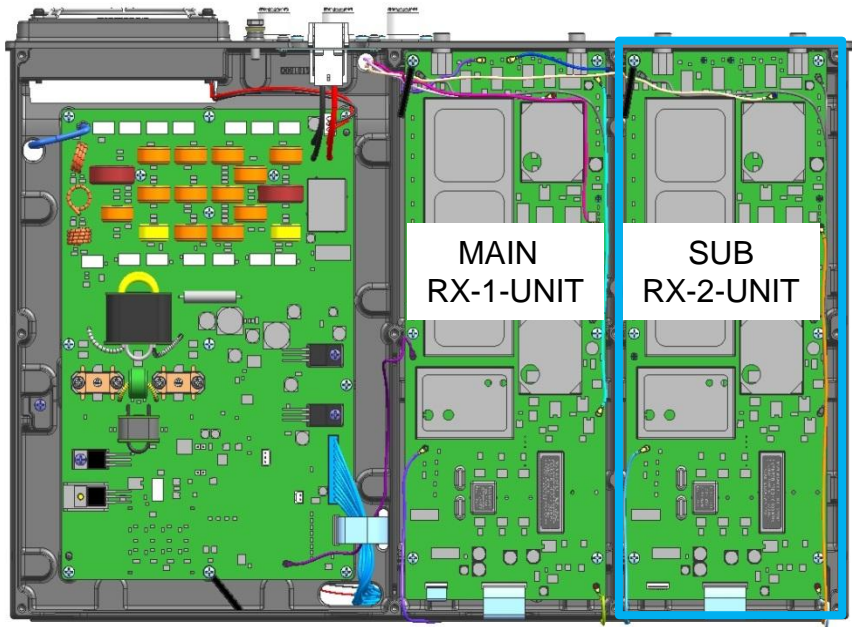
※Pass 4 coaxial cables under the lead clamp.。



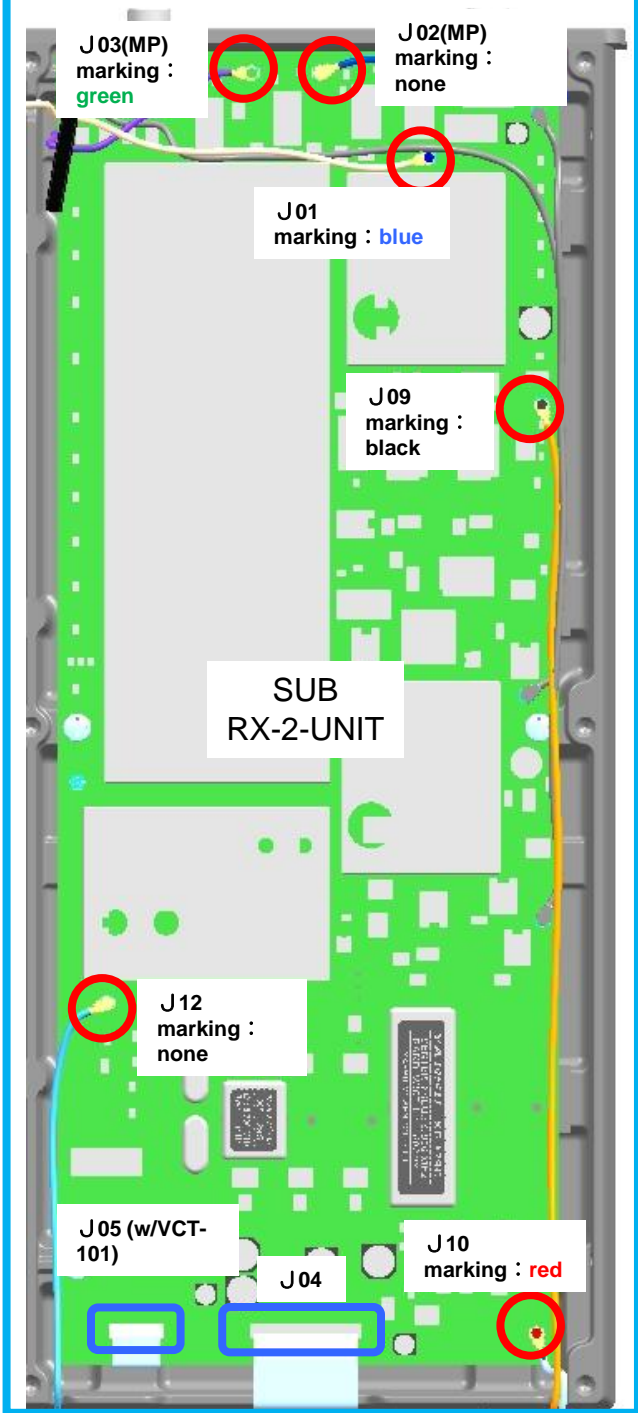
When installing the filters (XF-129CN/ XF-129SN) on the MAIN side (RX-2-UNIT)

2.Remove the RX-2-UNIT cable.

- Coaxial : 4 cables(w/o VCT-101), 6 cables (w/VCT-101)
- FFC cable : 1 cables (w/o VCT-101), 2 cables (w/VCT-101)



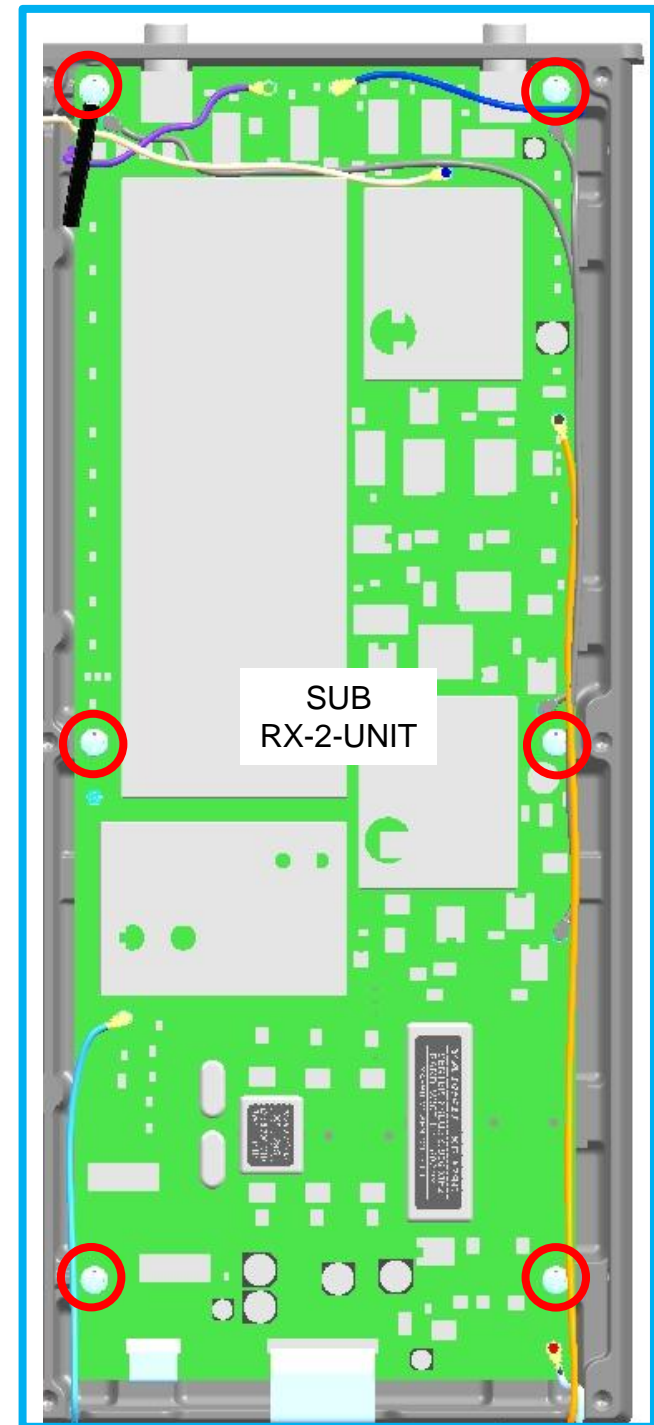
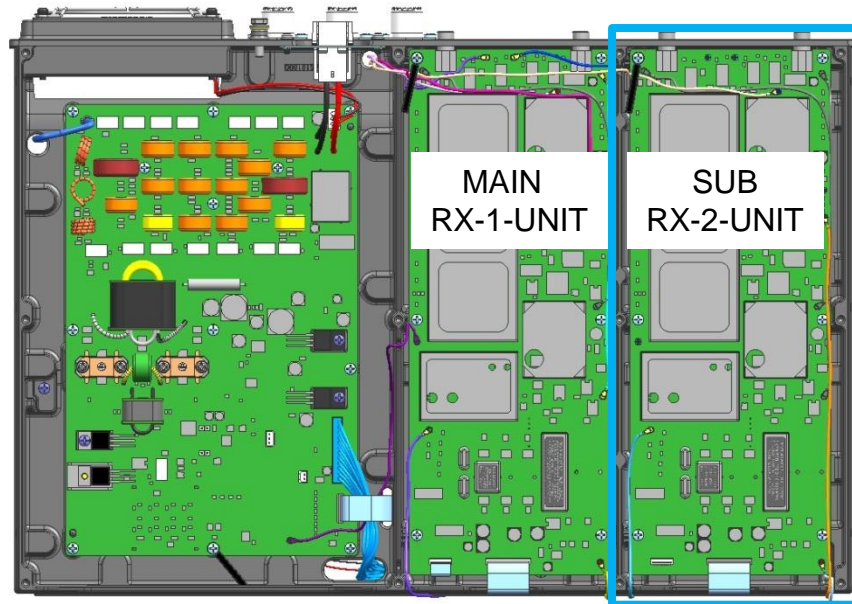
Note: If you find it difficult to remove the coaxial cable, we may provide you with a special jig. Please contact our Technical Support desk.





When installing the filters (XF-129CN/ XF-129SN) on the MAIN side (RX-2-UNIT)

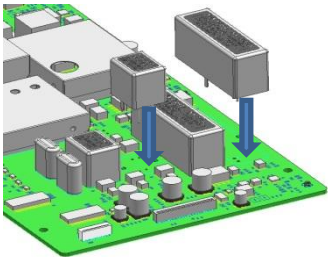
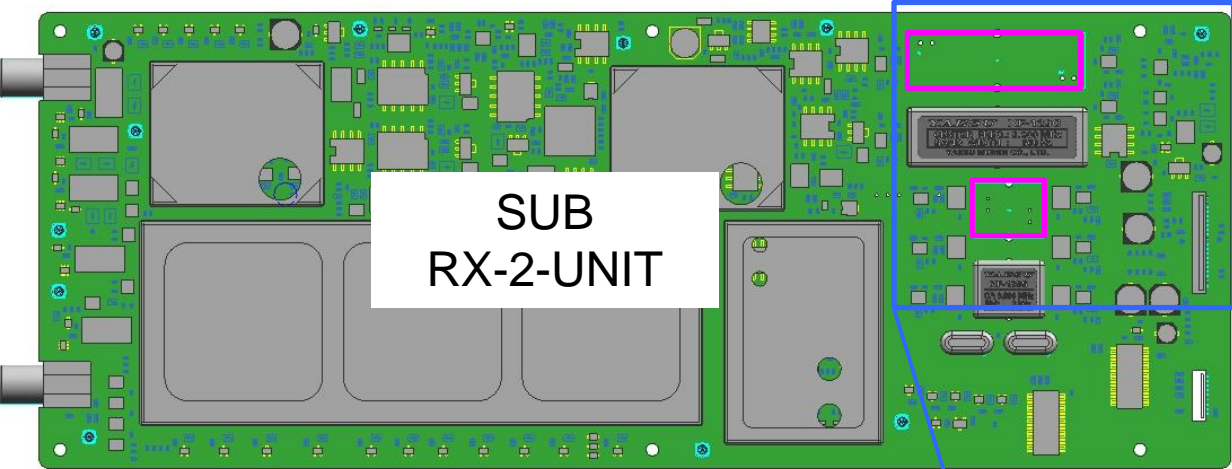
3. Remove 6 Screws and remove the RX-2-UNIT from the chassis.



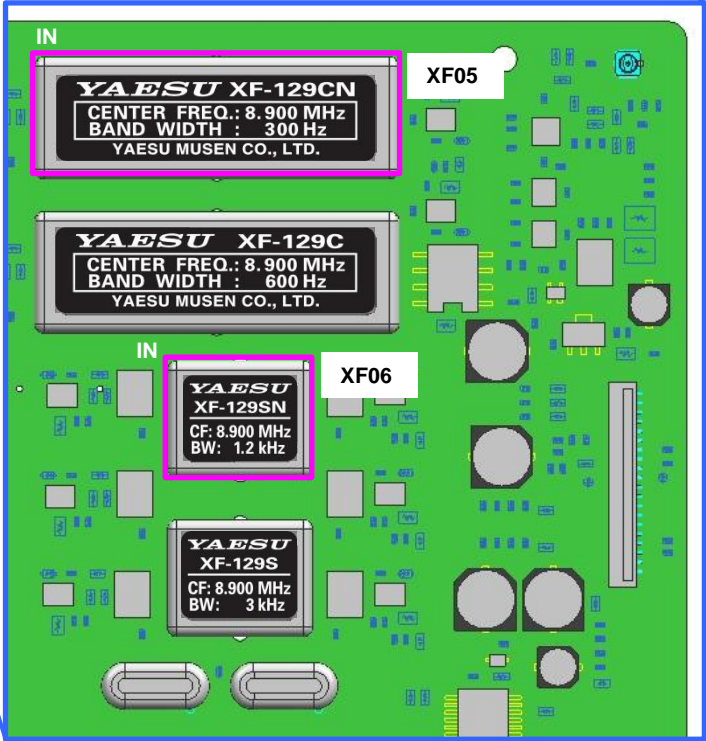
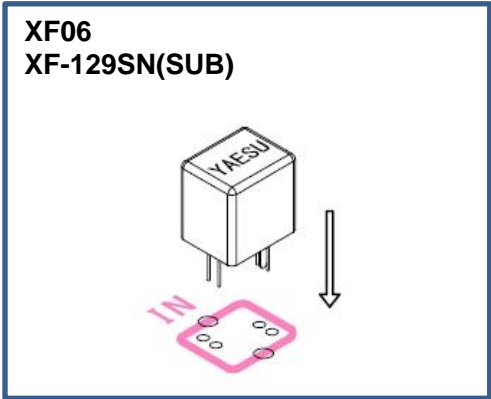
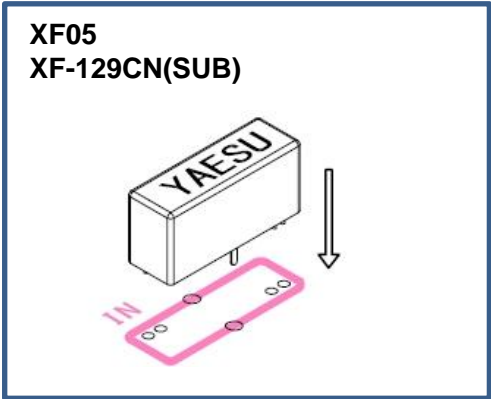


When installing the filters (XF-129CN/ XF-129SN) on the MAIN side (RX-2-UNIT)

- 4. Insert the filter in the specified positions and solder it.
- ✂ Cut the lead of filters to 2.0 mm or less, after the installation.



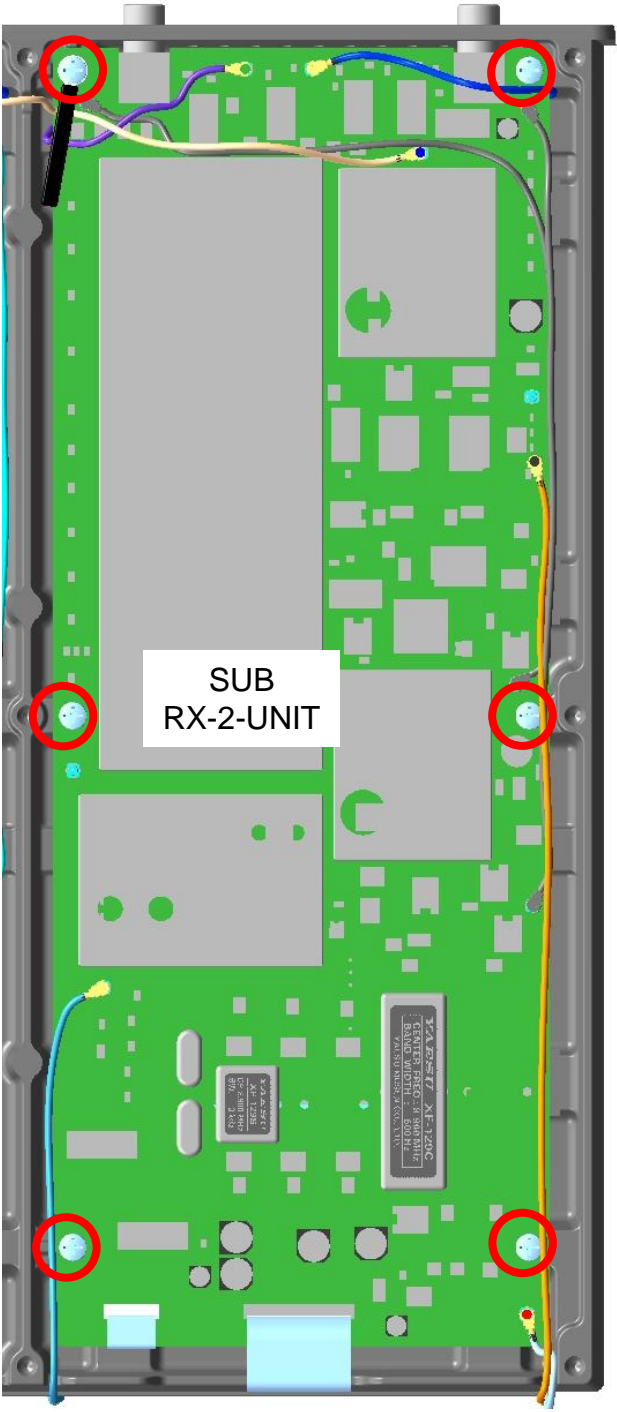
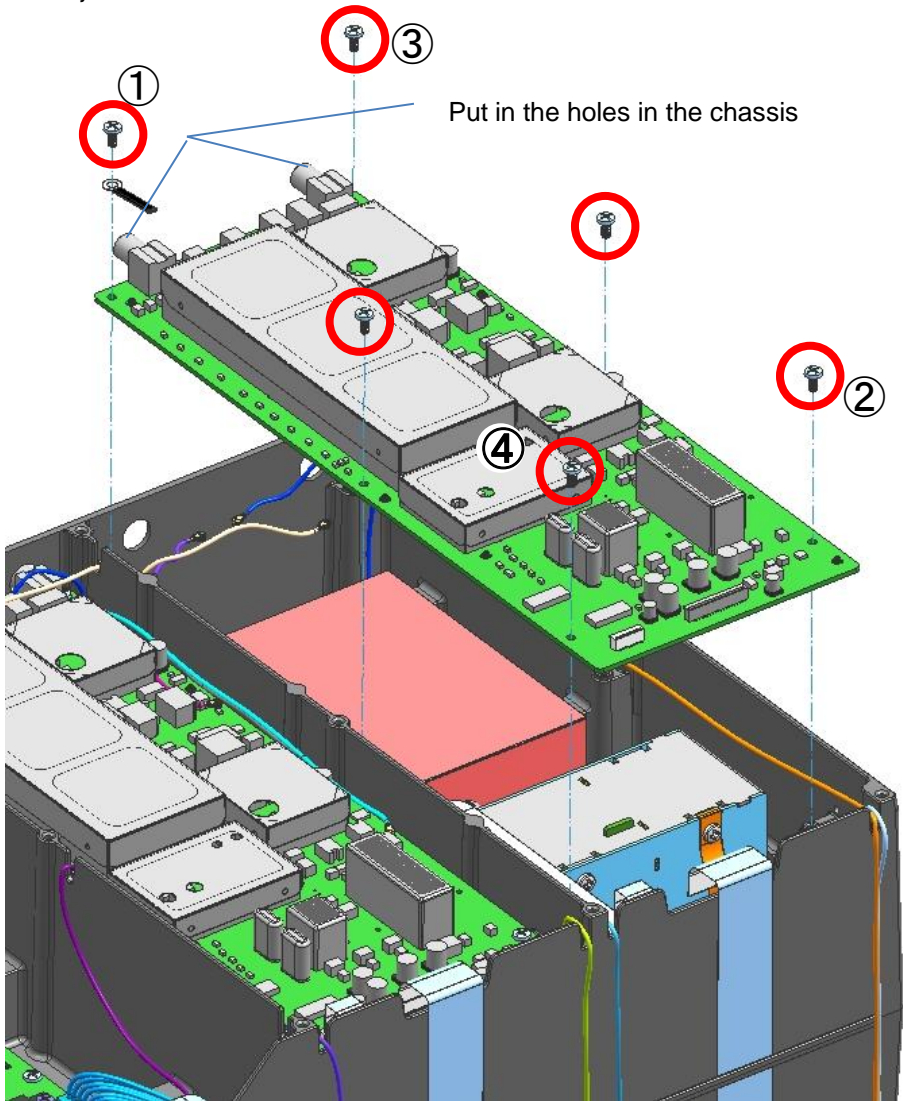
Please install the filters in correct direction.  
If installed in reverse, the performance quality cannot be guaranteed.



When installing the filters (XF-129CN/ XF-129SN) on the MAIN side (RX-2-UNIT)

5. Attach the RX-2-UNIT to the chassis.  
Fix and tighten the screws in order 1 → 2 → 3 → 4. For the rest of screws, there is no specific order.

5.0kgf • cm {0.49N • m}

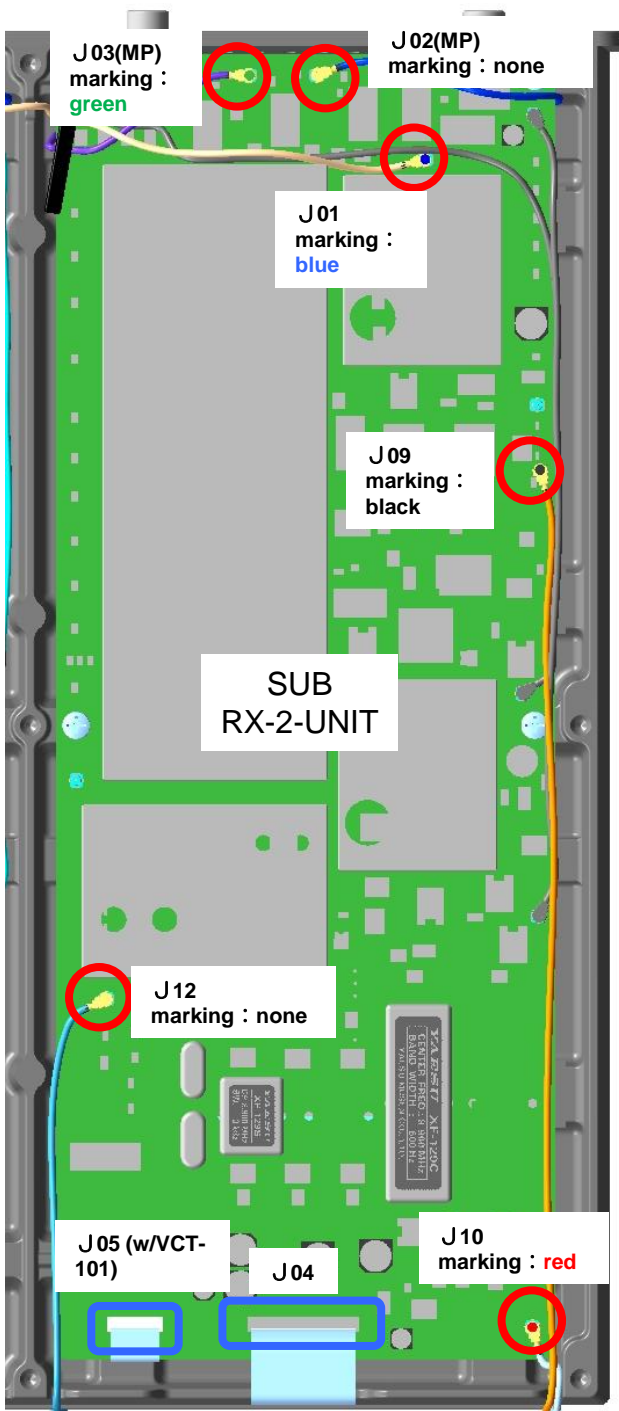
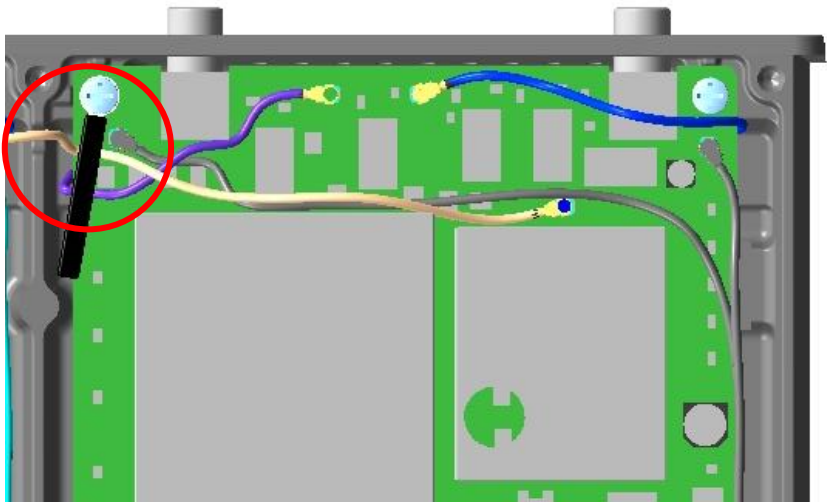


When installing the filters (XF-129CN/ XF-129SN) on the MAIN side (RX-2-UNIT)

6. Reconnect the cables to the connector of the RX-2-UNIT.

- Coaxial : 4 cables(w/o VCT-101), 6 cables(w/VCT-101)
- FFC cable : 1 cables(w/o VCT-101), 2 cables(w/VCT-101)

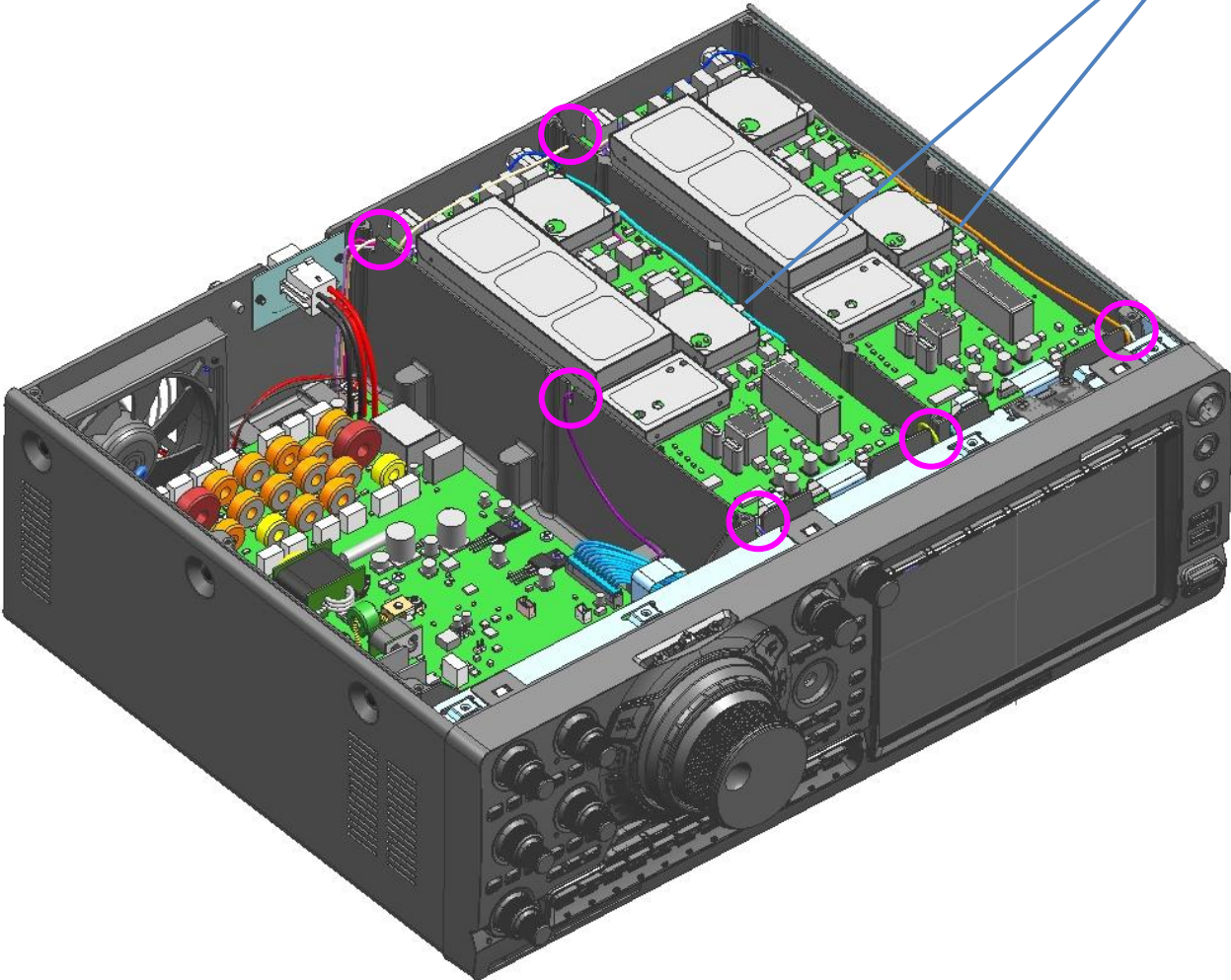
※Pass 4 coaxial cables under the lead clamp



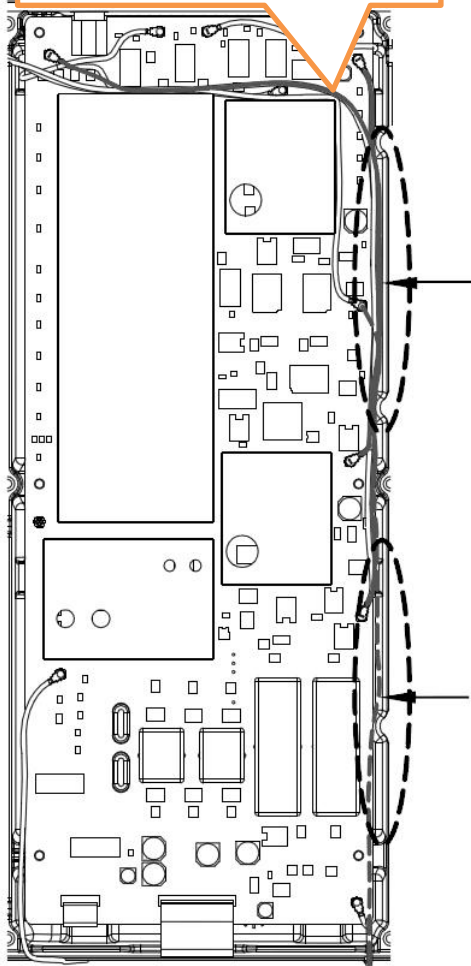


7. Make sure that all cable are within the top line of the chassis in order to avoid the cables be caught between chassis and case.

○ : the positions you should specially make sure



Insert the coaxial  
between the board  
and the chassis.



8. Reassemble the bottom case with 16 screws.
- ※ Slightly pushing in the direction of the arrow, tighten in order 1 → 2 → 3 → 4.
  - ※ For the rest of screws, there are no specified order.

8.0kgf • cm {0.78N • m}

