

MODIFICA POTENZA E BANDE SU MIDLAND G9 PLUS

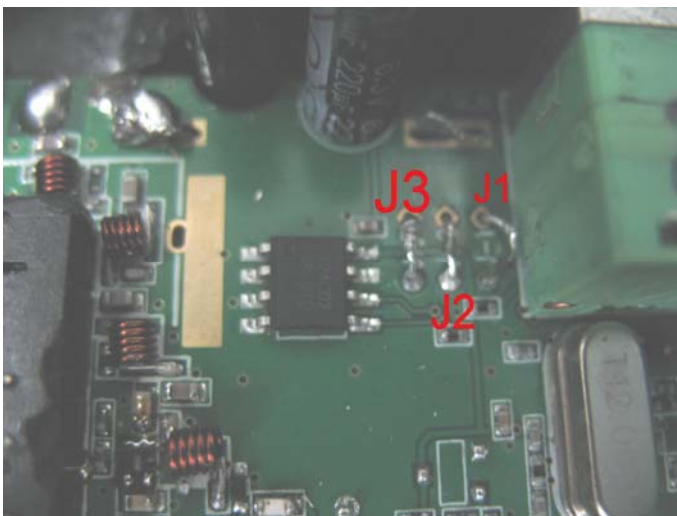
POWER OUTPUT AND BAND SETTING ON MIDLAND G9 PLUS


Italiano:


Rimuovere il guscio posteriore ed individuare i link riportati in figura e settare i ponticelli per la configurazione desiderata:

English:

Remove the back plastic cover and change the link setting as showed below and for configuration that you prefer:



 Default setting PMR (500mW) and LPD (10mW)

 PMR and LPD: high power 5W and low power 500mW



	Low (Short)	Hi (Open)	Hi (Open)	Hi (Open)	Low (Short)	Low (Short)
J-1 (Pin 49)	Low (Short)	Hi (Open)	Hi (Open)	Hi (Open)	Low (Short)	Low (Short)
J-2 (Pin 48)	Low (Short)	Low (Short)	Hi (Open)	Hi (Open)	Low (Short)	Hi (Open)
J-3 (Pin 47)	Low (Short)	Low (Short)	Low (Short)	Hi (Open)	Hi (Open)	Hi (Open)
Jp Option	24CH PMR (M / L)	24CH PMR (M / L) & LPD (Lo only)	LPD (L) only & No display power icon	LPD (H / M) & LCD display H/L	24CH PMR (H / M) & LPD (H / M)	24CH PMR (H / M)
Press PTT	24CH PMR (M / L)	24CH PMR (M / L) & LPD (Lo only)	LPD (L) only & No display power icon	LPD (H / M) & LCD display H/L	24CH PMR (H / M) & LPD (H / M)	24CH PMR (H / M)
Press Booster	24CH PMR (M / M)	24CH PMR (M / M) & LPD (Lo only)	LPD (L) only & No display power icon	LPD (H / H) & LCD display H/L	24CH PMR (H / H) & LPD (H / H)	24CH PMR (H / H)
Default EMG CH	8CH 50 DCS	8CH 50 DCS	20CH 50 DCS	20CH 50 DCS	8CH 50 DCS	8CH 50 DCS
Power	Hi power : 5.0 W		Mid power : 500mW		Low power : 10mW	